

CMMCP WEEKLY SURVEILLANCE REPORT



EPI week #32
Aug. 7 - 13, 2011

Frank Cornine, *Field Biologist*
Curtis Best, *Staff Entomologist*
Tim McGlinchy, *Director of Operations*
Tim Deschamps, *Executive Director*

Central Mass. Mosquito Control Project
Weekly Report- 8/7/11-8/13/11
EPI Week #32

Cumulative Surveillance Summary

Target Species	<i>Ae. vex</i>	<i>Cq. per</i>	<i>Cs. mel</i>	<i>Oc. can</i>	<i>Culex</i>	All Species
No. Pools	14	185	97	53	683	1649
Total Specimens	37	6237	608	332	20232	29861
No. Pools WNV +	0	0	0	0	2	2
No. Pools EEE +	0	0	0	0	0	0

Pool of WNV+ *Culex* Species collected in Sturbridge on 7/22/11

Pool of WNV+ *Culex* Species collected in Acton on 7/28/11

Weather Summary (Northborough, MA): The weather for this particular week averaged 71.79°F with a recorded high temperature of 87.4°F and a recorded low temperature of only 55.9°F. For this week there was also a total of 4.31 inches of rain observed. Compared to the previous week, it was approximately 1.5°F cooler on average, and rained about 3.76 inches more. There has been 4.86 inches of rain accumulated in August, while the total rainfall for the month of July was 1.73 inches. For the year we have received 56% more requests than average; 11,327 requests to date compared to the 8 year average of 7,233. Requests were 25% more than the 2010 totals, 11,327 in 2011 against 9,069 in 2010. Service requests **decreased 63%** from EPI week 31 to Epi week 32 for 2011 (396 vs. 647).

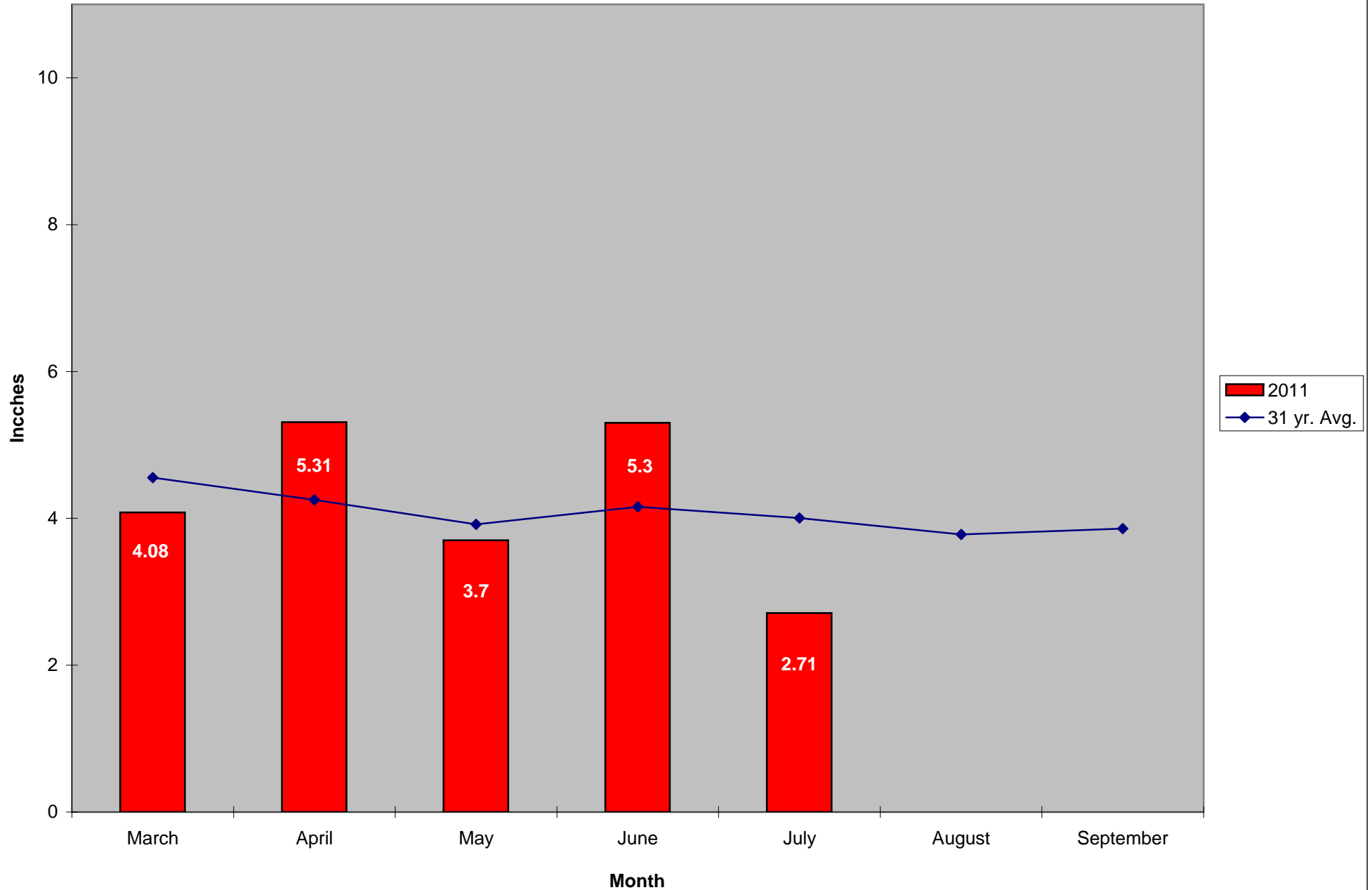
CMMCP Mosquito Summary-

Target Species	Δ From Last Week	Δ From Last Year	Predominant Trap Site(s)
----------------	---------------------	---------------------	--------------------------

<i>Aedes vexans</i>	-100.0%	-100.0%	N/A
<i>Coquillettidia perturbans</i>	-30.67%	-47.03%	Sturbridge, Webster
<i>Culiseta melanura</i>	+48.89%	+252.6%	Wilmington, Berlin
<i>Ochlerotatus canadensis</i>	-100.0%	+00.00%	N/A
<i>Culex</i> Species	+104.1%	+209.1%	Westford, Millbury
All Species	+44.34%	+61.60%	Westford, Millbury

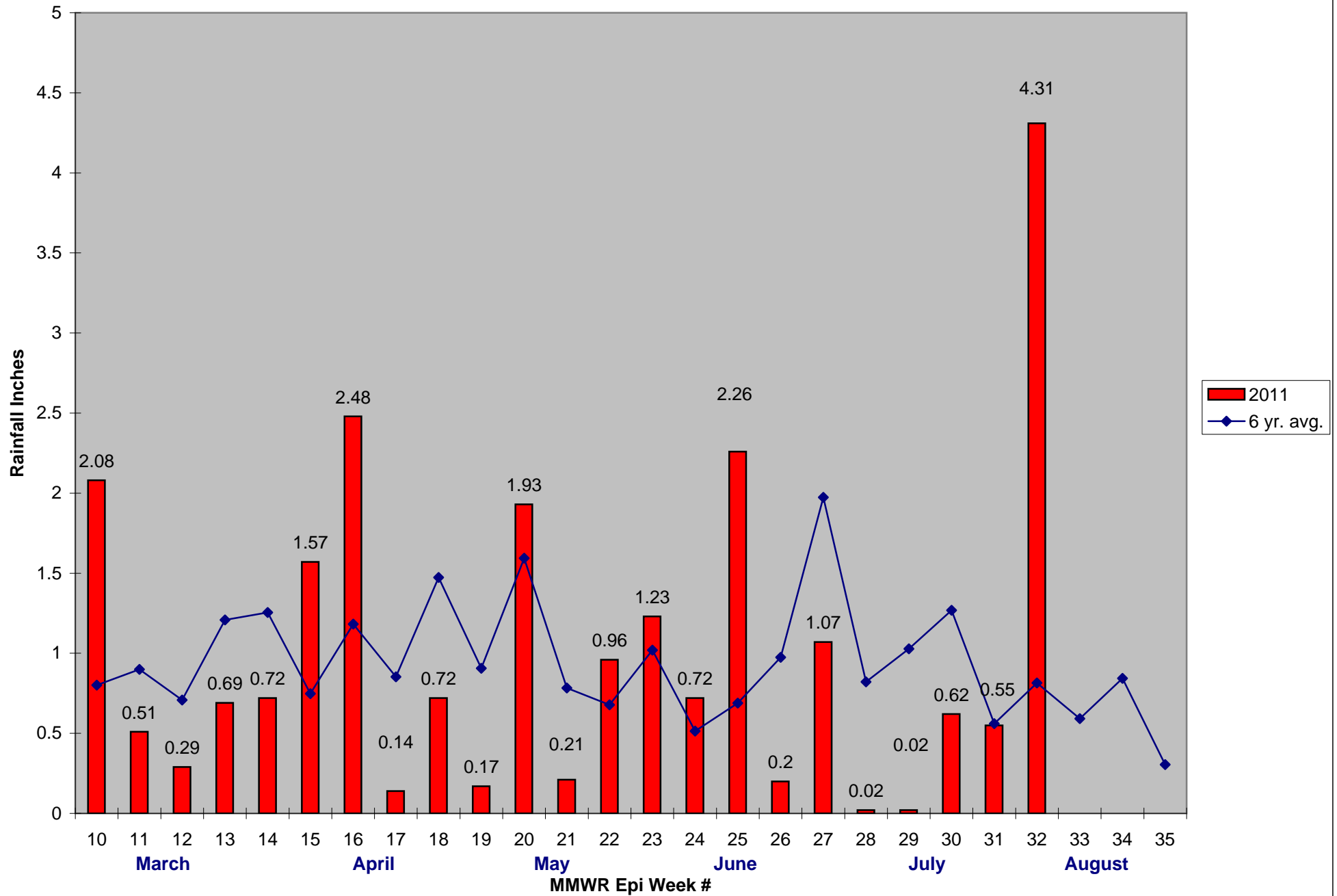
The predominant mosquito for the week was *Culex* spp.
followed by *Coquillettidia perturbans*.

2011 Mass. Rainfall Data vs. 31 Year Average*



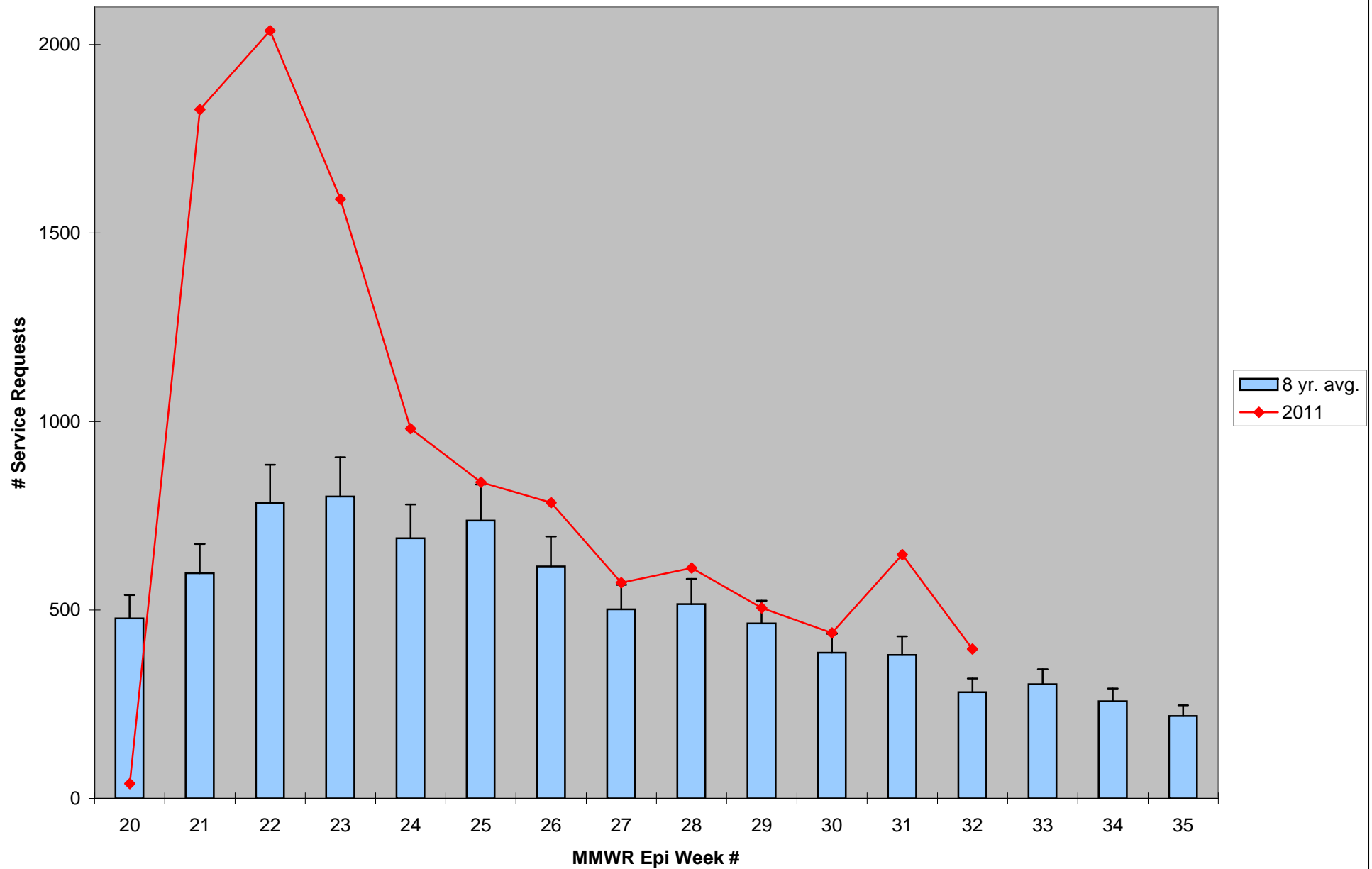
*Source: Northeast Regional Climate Center: http://www.nrcc.cornell.edu/page_summaries.html

2011 CMMCP Weekly Rainfall vs. 6 Year Average*



*Source: CMMCP Weather Station - Northborough, MA

ULV Service Request History Comparison 2003-2011



Error bars show approx. number of requests if we had 39 cities and towns over the 8 year average

2011 Rainfall vs. Requests

