

CMMCP WEEKLY SURVEILLANCE REPORT



EPI week #32
Aug. 4-10, 2013

Frank Cornine, *Field Biologist*
Curtis Best, *Staff Entomologist*
Juliana Miller, *Entomologist*
Tim McGlinchy, *Director of Operations*
Tim Deschamps, *Executive Director*

Central Mass. Mosquito Control Project
Weekly Report- 8/4/13-8/10/13
EPI Week #32

Cumulative Surveillance Summary

Target Species	<i>Ae. vex</i>	<i>Cq. per</i>	<i>Cs. mel</i>	<i>Oc. can</i>	<i>Culex</i>	All Species
No. Pools	76	189	142	106	527	1815
Total Specimens	881	8536	950	1077	6347	20224
No. Pools WNV +	0	0	0	0	2 [†]	2 [†]
No. Pools EEE +	0	0	0	0	0	0

[†]Pool of WNV+ *Culex* Species collected in Holliston on 8/1/13

[†]Pool of WNV+ *Culex* Species collected in Tewksbury on 8/2/13

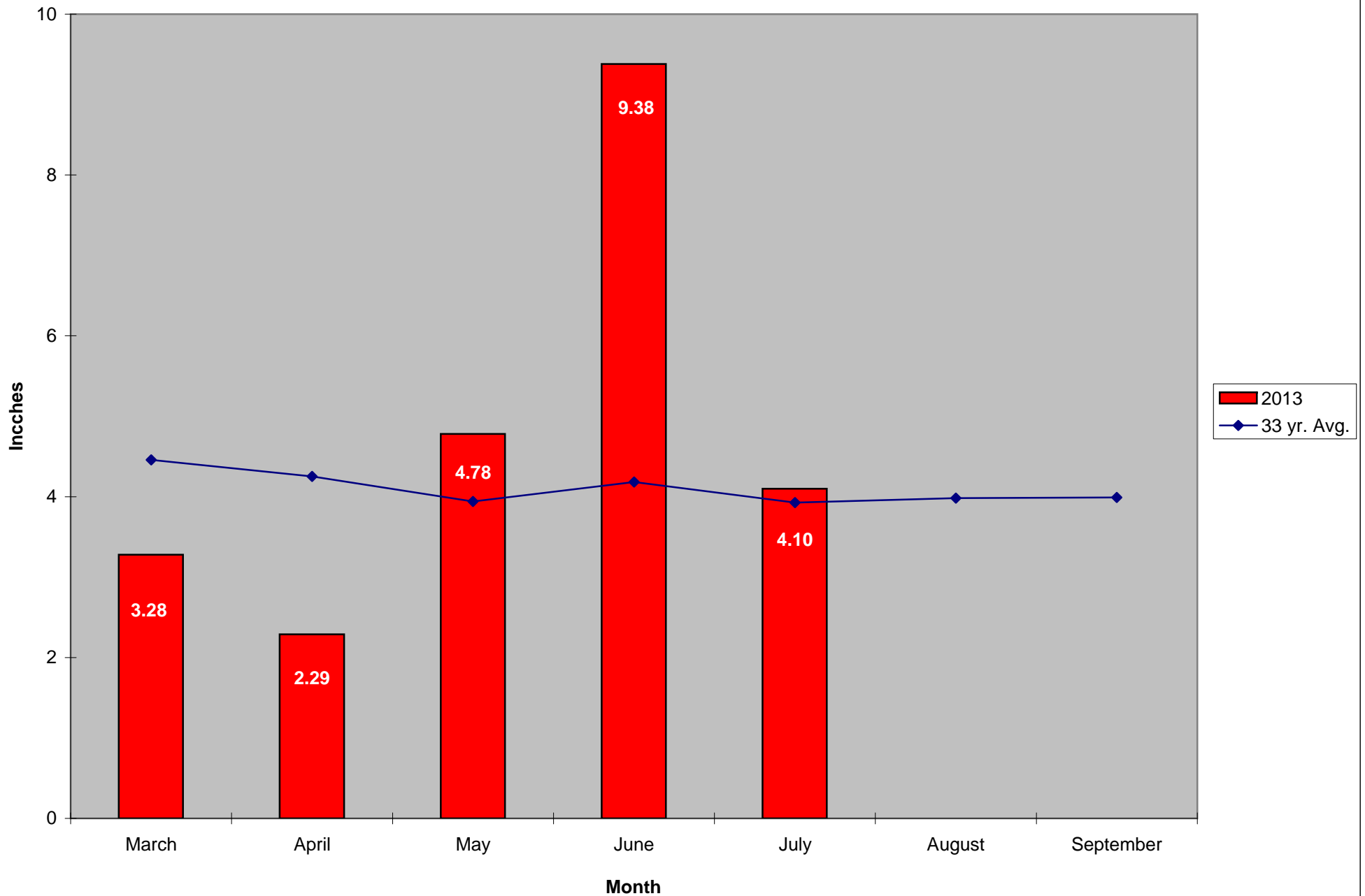
Weather Summary (Northborough, MA): The weather for this particular week averaged 68.80°F with a recorded high temperature of 81.80°F and a recorded low temperature of only 48.50°F. For this week there was also a total of 1.37 inches of rain observed. Compared to the previous week, it was approximately 2.77°F cooler on average, and rained about 0.83 inches more. There has been 1.90 inches of rain accumulated in August, while the total rainfall for the month of July was 2.85 inches. For the year we have received 43% more requests than average; 10,689 requests to date compared to the 10 year average of 7,475. Requests were 12.6% more than the 2012 totals for the same time frame, 9,492 in 2012 against 10,689 in 2013. Service requests decreased 39% from EPI week 31 to Epi week 32 in 2013 (732 vs. 525).

CMMCP Mosquito Summary*-

Target Species	Δ From Last Week	Δ From Last Year	Predominant Trap Site(s)
<i>Aedes vexans</i>	-50.00%	+00.00%	Chelmsford, Lancaster
<i>Coquillettidia perturbans</i>	-71.65%	+335.3%	Chelmsford, Lancaster, Ayer
<i>Culiseta melanura</i>	-33.33%	+233.3%	Billerica, Tewksbury
<i>Ochlerotatus canadensis</i>	-80.95%	+300.0%	Hopkinton, Millville
<i>Culex</i> Species	+131.0%	-60.82%	Hopedale
All Species	-38.77%	+2.230%	Hopedale, Hopkinton

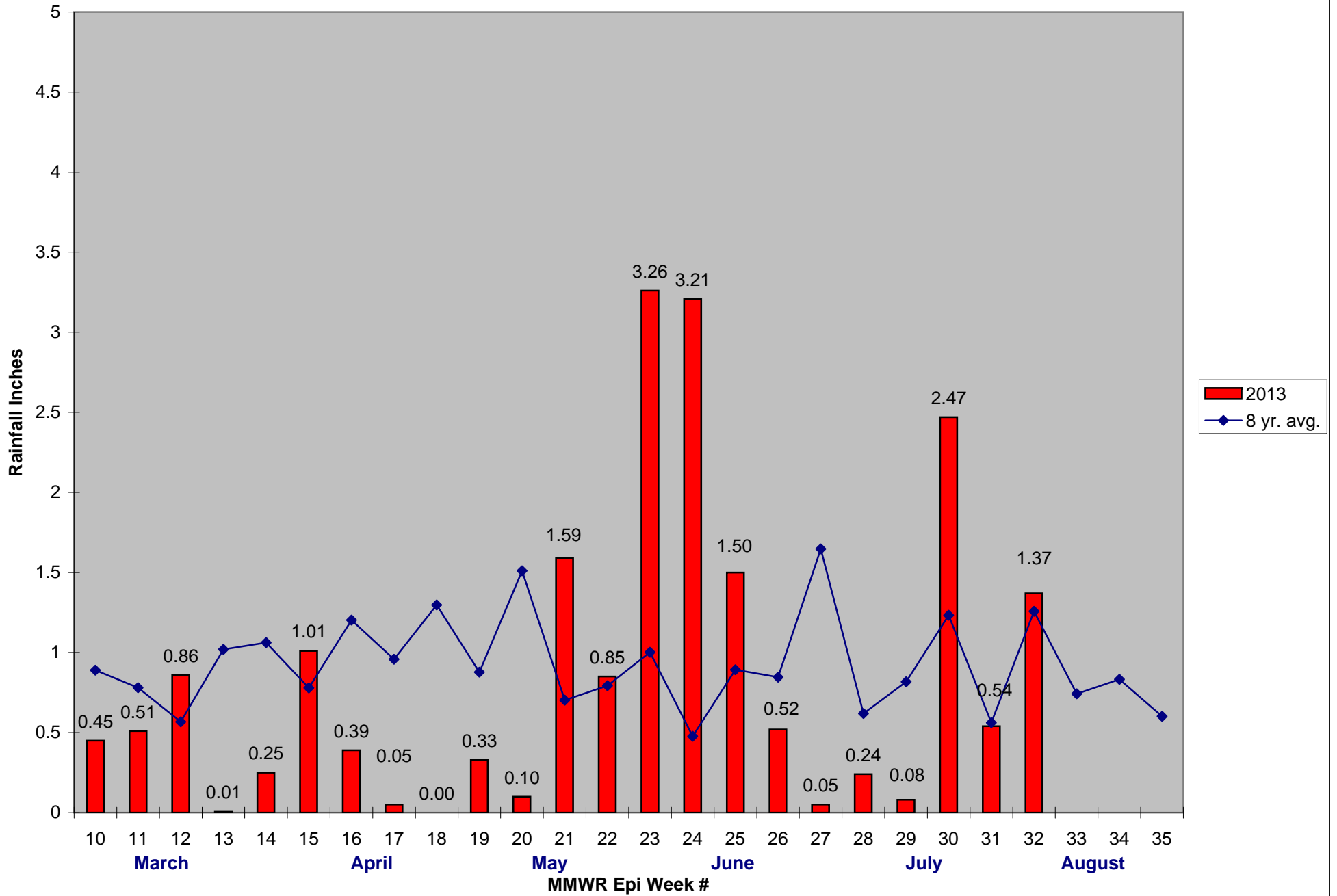
The predominant mosquito for the week was *Culex* Species,
followed by *Coquillettidia perturbans*.

2013 Mass. Rainfall Data vs. 33 Year Average*



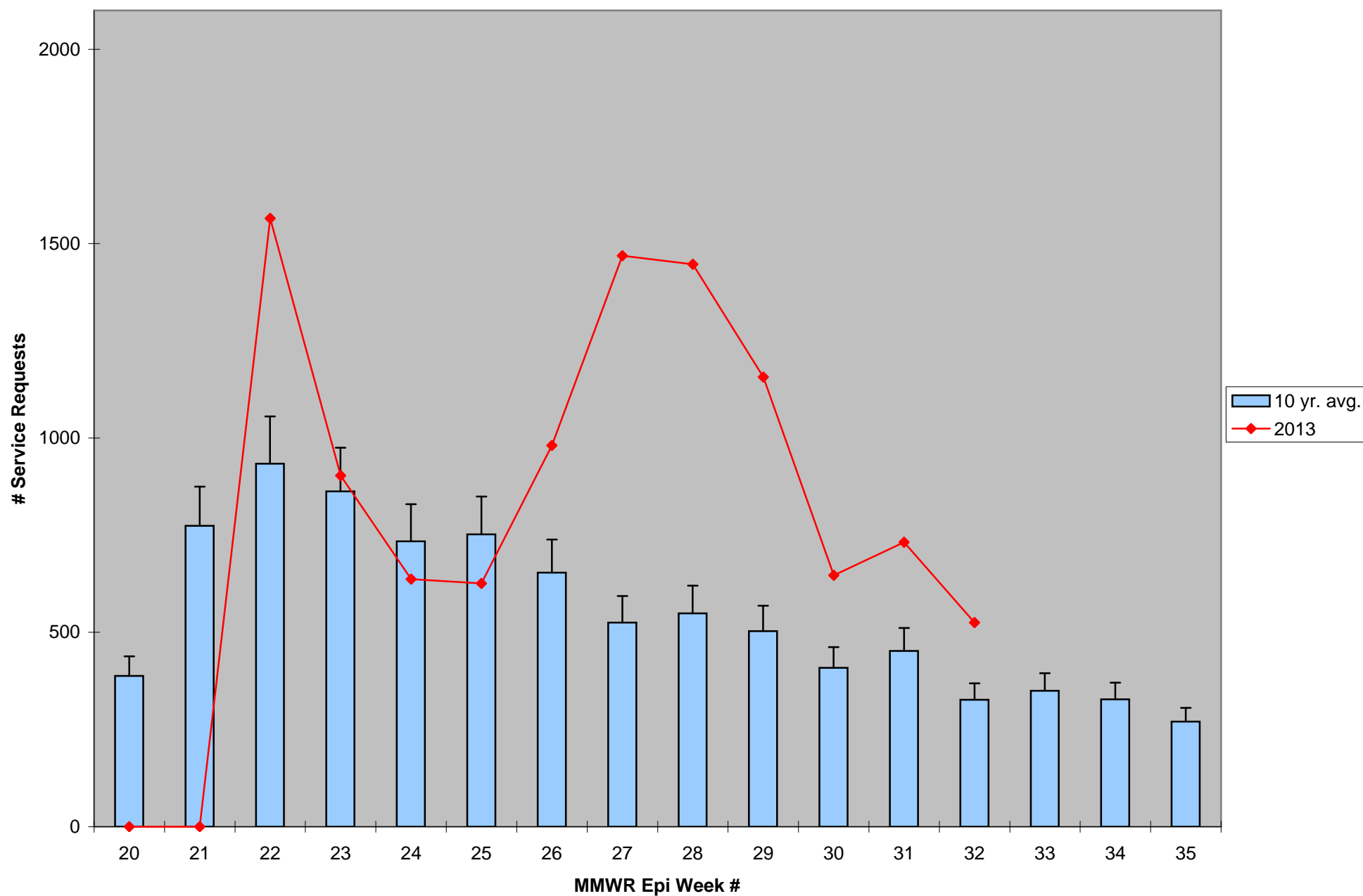
*Source: Northeast Regional Climate Center: http://www.nrcc.cornell.edu/page_summaries.html

2013 CMMCP Weekly Rainfall vs. 8 Year Average*



*Source: CMMCP Weather Station - Northborough, MA

ULV Service Request History Comparison 2003-2013



Error bars show approx. number of requests if we had 40 cities and towns over the 10 year average

2013 Rainfall vs. Requests

