

# CMMCP WEEKLY SURVEILLANCE REPORT



**EPI week #33**  
**Aug. 12 – 18, 2012**

**Frank Cornine**, *Field Biologist*  
**Curtis Best**, *Staff Entomologist*  
**Juliana Miller**, *Entomologist*  
**Tim McGlinchy**, *Director of Operations*  
**Tim Deschamps**, *Executive Director*

**Central Mass. Mosquito Control Project**  
**Weekly Report- 8/12/12-8/18/12**  
**EPI Week #33**

**Cumulative Surveillance Summary**

<b>Target Species</b>	<b><i>Ae. vex</i></b>	<b><i>Cq. per</i></b>	<b><i>Cs. mel</i></b>	<b><i>Oc. can</i></b>	<b><i>Culex</i></b>	<b>All Species</b>
<b>No. Pools</b>	30	258	192	85	720	2101
<b>Total Specimens</b>	77	7782	1582	381	16688	29490
<b>No. Pools WNV +</b>	0	0	1 <sup>†</sup>	0	17 <sup>†</sup>	18 <sup>†</sup>
<b>No. Pools EEE +</b>	0	1 <sup>†</sup>	2 <sup>†</sup>	0	2 <sup>†</sup>	5 <sup>†</sup>

<sup>†</sup>Pool of EEE+ *Culex* Species collected in Westborough on 7/17/12

<sup>†</sup>Pool of WNV+ *Culex* Species collected in Shrewsbury on 7/18/12

<sup>†</sup>Pool of WNV+ *Culex* Species collected in Tewksbury on 7/20/12

<sup>†</sup>Pool of WNV+ *Culex* Species collected in Westford on 7/25/12

<sup>†</sup>Pool of WNV+ *Culex* Species collected in Chelmsford on 7/25/12

<sup>†</sup>Pool of EEE+ *Culex* Species collected in Westborough on 7/27/12

<sup>†</sup>Pool of WNV+ *Culex* Species collected in Westborough on 7/31/12

<sup>†</sup>Pool of WNV+ *Culex* Species collected in Boylston on 7/31/12

<sup>†</sup>Pool of WNV+ *Culex* Species collected in Fitchburg on 7/31/12

<sup>†</sup>Pool of EEE+ *Culiseta melanura* collected in Westborough on 8/2/12

<sup>†</sup>Pool of WNV+ *Culex* Species collected in Chelmsford on 8/2/12

<sup>†</sup>Pool of WNV+ *Culex* Species collected in Dracut on 8/3/12

<sup>†</sup>Pool of WNV+ *Culex* Species collected in Leominster on 8/3/12

Pool of WNV+ *Culex pipiens/restuans* collected in Worcester on 8/3/10 (DPH collection)

<sup>†</sup>Pool of WNV+ *Culex* Species collected in Dracut on 8/7/12

<sup>†</sup>Pool of WNV+ *Culex* Species collected in Millbury on 8/7/12

<sup>†</sup>Pool of WNV+ *Culex* Species collected in Lunenburg on 8/7/12

<sup>†</sup>Pool of WNV+ *Culiseta melanura* collected in Wilmington on 8/7/12

<sup>†</sup>Pool of WNV+ *Culex* Species collected in Berlin on 8/8/12

<sup>†</sup>Pool of WNV+ *Culex* Species collected in Shrewsbury on 8/9/12

<sup>†</sup>Pool of WNV+ *Culex* Species collected in Hopedale on 8/9/12

<sup>†</sup>Pool of EEE+ *Culiseta melanura* collected in Westborough on 8/9/12

<sup>†</sup>Pool of EEE+ *Coquillettidia perturbans* collected in Westborough on 8/9/12

<sup>†</sup>Pool of WNV+ *Culex* Species collected in Northborough on 8/10/12

**Weather Summary (Northborough, MA):** The weather for this particular week averaged 72.5°F with a recorded high temperature of 85.7°F and a recorded low temperature of only 60.1°F. For this week there was also a total of 0.27 inches of rain observed. Compared to the previous week, it was approximately 2.79°F cooler on average, and rained about 0.59 inches less. There has been 1.48 inches of rain accumulated in August, while the total rainfall for the month of July was 2.48 inches at the CMMCP weather station (2.78" statewide avg.). For the year we have received 35% more requests than average; 10,210 requests to date compared to the 9 year average of 7,560. Requests were 13% less than the 2011 totals for the same time frame, 11,583

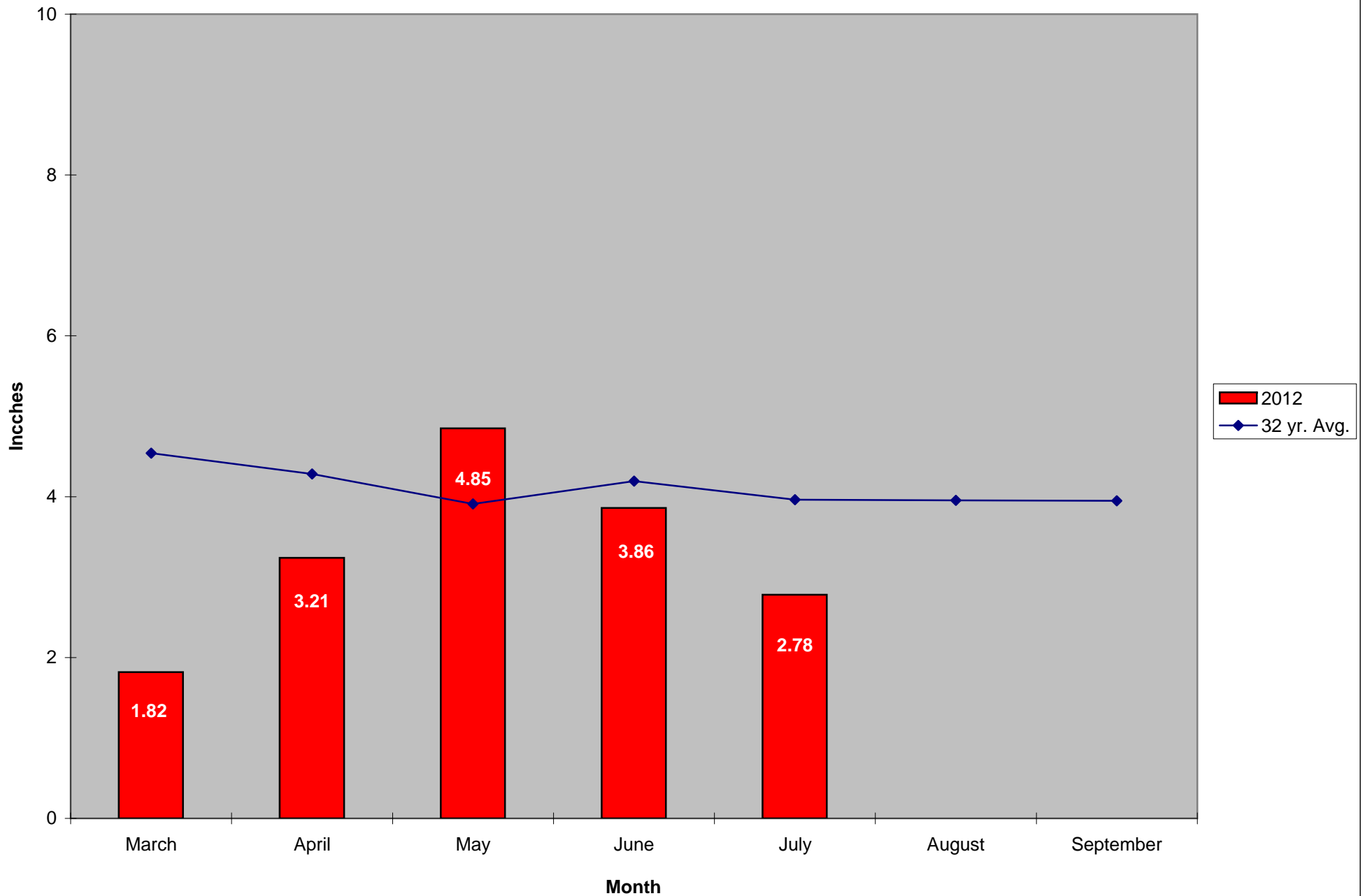
in 2011 against 10,210 in 2012. Service requests increased 17% from EPI week 32 to Epi week 33 for 2012 (614 vs. 718).

#### **CMMCP Mosquito Summary-**

<b>Target Species</b>	<b>Δ From Last Week</b>	<b>Δ From Last Year</b>	<b>Predominant Trap Site(s)</b>
<i>Aedes vexans</i>	00.00%	-100.0%	N/A
<i>Coquillettidia perturbans</i>	-17.93%	+65.28%	Acton
<i>Culiseta melanura</i>	-48.48%	-73.64%	Shrewsbury
<i>Ochlerotatus canadensis</i>	+100.0%	+100.0%	Sherborn, Littleton
<i>Culex</i> Species	+98.86%	+161.8%	Hopedale, Auburn
All Species	+47.85%	+95.27%	Hopedale, Auburn

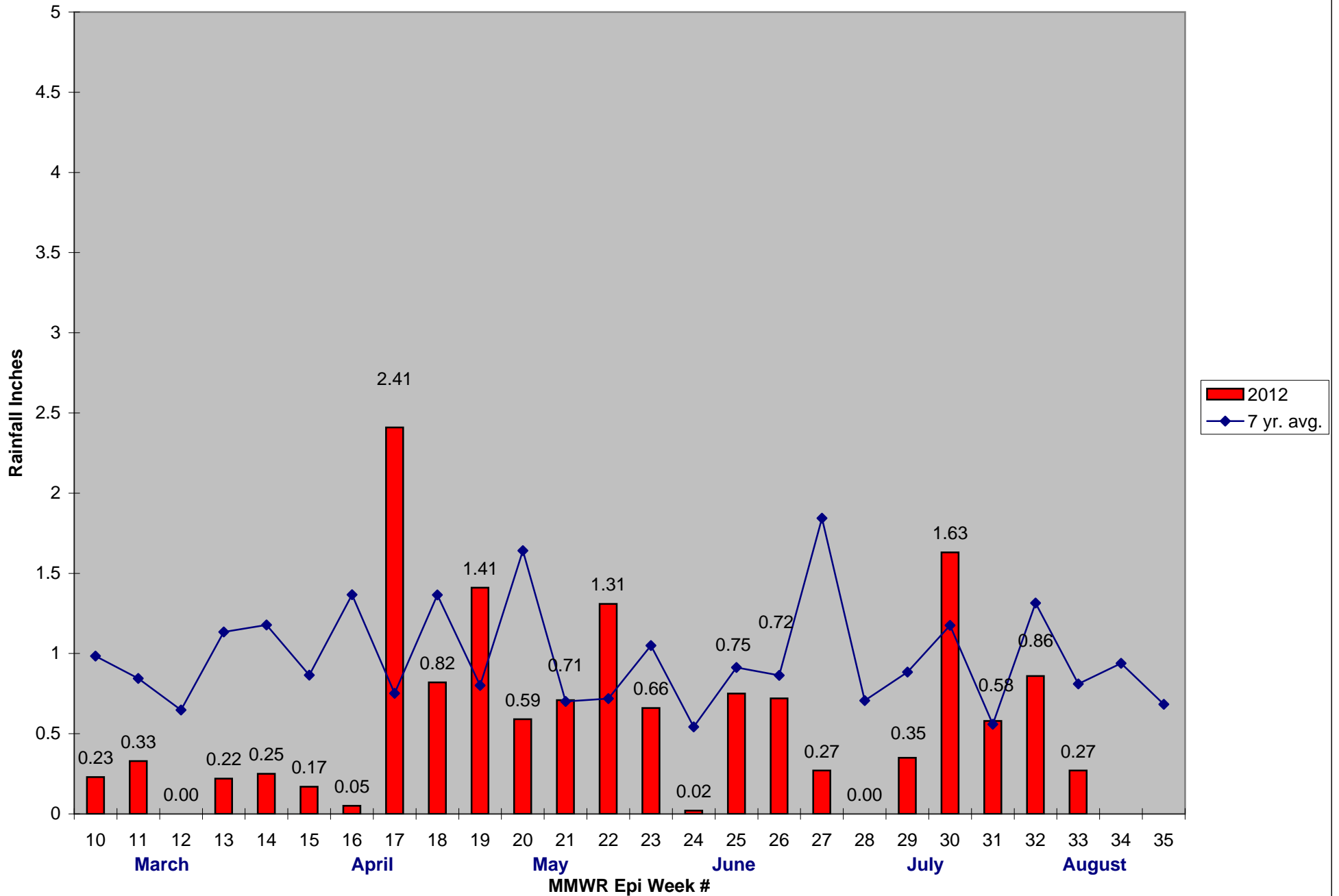
The predominant mosquito for the week was *Culex* Species,  
followed by *Coquillettidia perturbans*.

### 2012 Mass. Rainfall Data vs. 32 Year Average\*



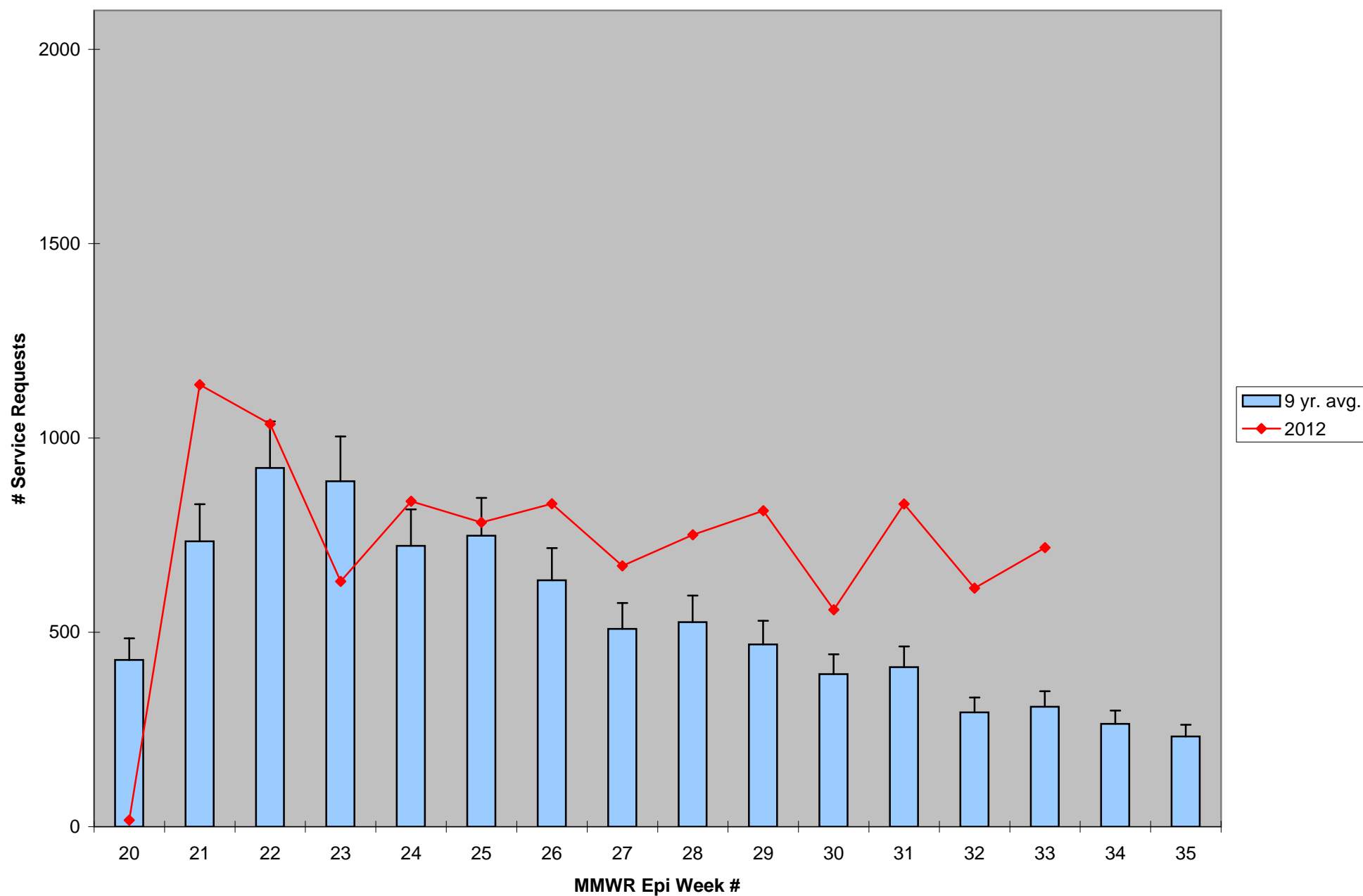
\*Source: Northeast Regional Climate Center: [http://www.nrcc.cornell.edu/page\\_summaries.html](http://www.nrcc.cornell.edu/page_summaries.html)

2012 CMMCP Weekly Rainfall vs. 7 Year Average\*



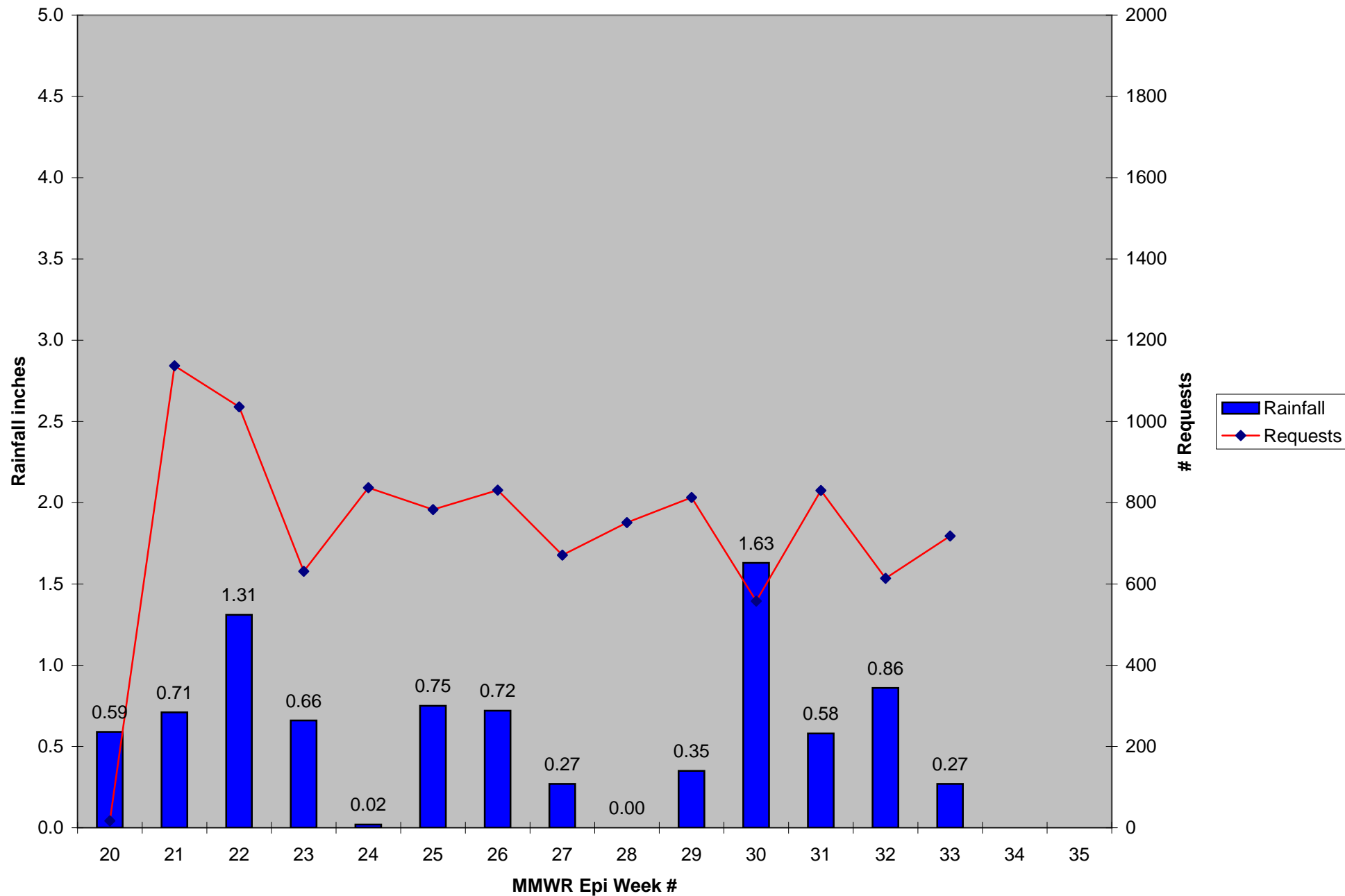
\*Source: CMMCP Weather Station - Northborough, MA

## ULV Service Request History Comparison 2003-2012



Error bars show approx. number of requests if we had 40 cities and towns over the 9 year average

2012 Rainfall vs. Requests



2012 Temp vs. Requests

