

# CMMCP WEEKLY SURVEILLANCE REPORT



**EPI week #33**  
**Aug. 11-17, 2013**

**Frank Cornine**, *Field Biologist*  
**Curtis Best**, *Staff Entomologist*  
**Juliana Miller**, *Entomologist*  
**Tim McGlinchy**, *Director of Operations*  
**Tim Deschamps**, *Executive Director*

**Central Mass. Mosquito Control Project**  
**Weekly Report- 8/11/13-8/17/13**  
**EPI Week #33**

**Cumulative Surveillance Summary**

Target Species	<i>Ae. vex</i>	<i>Cq. per</i>	<i>Cs. mel</i>	<i>Oc. can</i>	<i>Culex</i>	All Species
<b>No. Pools</b>	90	221	154	123	572	2082
<b>Total Specimens</b>	1106	9288	1035	1164	6764	21945
<b>No. Pools WNV +</b>	0	0	0	0	5 <sup>†</sup>	5 <sup>†</sup>
<b>No. Pools EEE +</b>	0	0	0	0	0	0

<sup>†</sup>Pool of WNV+ *Culex* Species collected in Holliston on 8/1/13

<sup>†</sup>Pool of WNV+ *Culex* Species collected in Tewksbury on 8/2/13

<sup>†</sup>Pool of WNV+ *Culex* Species collected in Chelmsford on 8/7/13

<sup>†</sup>Pool of WNV+ *Culex* Species collected in Shrewsbury on 8/9/13

<sup>†</sup>Pool of WNV+ *Culex* Species collected in Boxborough on 8/9/13

**Weather Summary (Northborough, MA):** The weather for this particular week averaged 66.87°F with a recorded high temperature of 83.10°F and a recorded low temperature of only 51.70°F. For this week there was also a total of 0.02 inches of rain observed. Compared to the previous week, it was approximately 1.93°F cooler on average, and rained about 1.35 inches less. There has been 1.92 inches of rain accumulated in August, while the total rainfall for the month of July was 2.85 inches. For the year we have received 42% more requests than average; 11,125 requests to date compared to the 10 year average of 7,825. Requests were 8.96% more than the 2012 totals for the same time frame, 10,210 in 2012 against 11,125 in 2013. Service requests decreased 20% from EPI week 32 to Epi week 33 in 2013 (525 vs. 436).

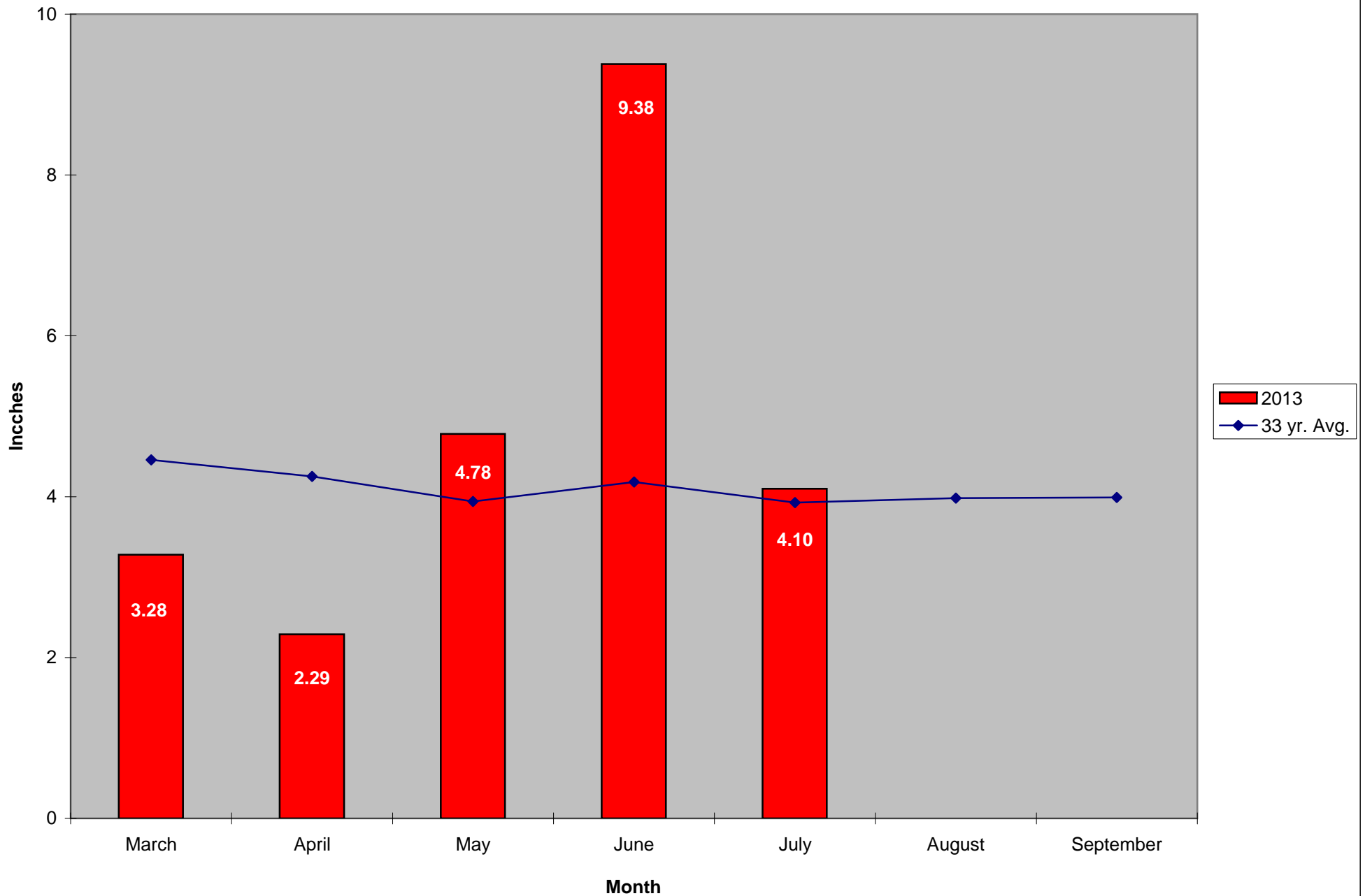
West Nile Virus was identified in 3 CMMCP member communities In Epi week 33 (collections from Epi week 32), all in *Culex* mosquitoes. An application in Chelmsford was performed Aug. 15 after consultation with the local BOH. Additional surveillance traps were placed in the area, and catch basins were re-treated (initial treatments late May 2013). Applications in Boxborough and Shrewsbury are scheduled for Aug. 20 after consultation with the respective Boards of Health. Additional surveillance is being gathered; catch basins were just treated in the area in Shrewsbury, and Boxborough basins were treated Aug. 15. Additional information on our vector events is available at this link: <http://www.cmmcp.org/2013vector.htm>. Press releases were issued by each community, and numerous media outlets reported this information, with CMMCP staff participated in 3 interviews for print and/or television media.

**CMMCP Mosquito Summary\*-**

<b>Target Species</b>	<b>Δ From Last Week</b>	<b>Δ From Last Year</b>	<b>Predominant Trap Site(s)</b>
<i>Aedes vexans</i>	+200.0%	+200.0%	Chelmsford, Ashland
<i>Coquillettidia perturbans</i>	+102.7%	+158.6%	Stow, Millbury
<i>Culiseta melanura</i>	+360.0%	+119.1%	Millbury, Westborough
<i>Ochlerotatus canadensis</i>	+100.0%	+700.0%	Littleton, Boxborough
<i>Culex</i> Species	+5.970%	+9.230%	Sturbridge, Westborough
All Species	+49.78%	+104.2%	Westborough, Shrewsbury

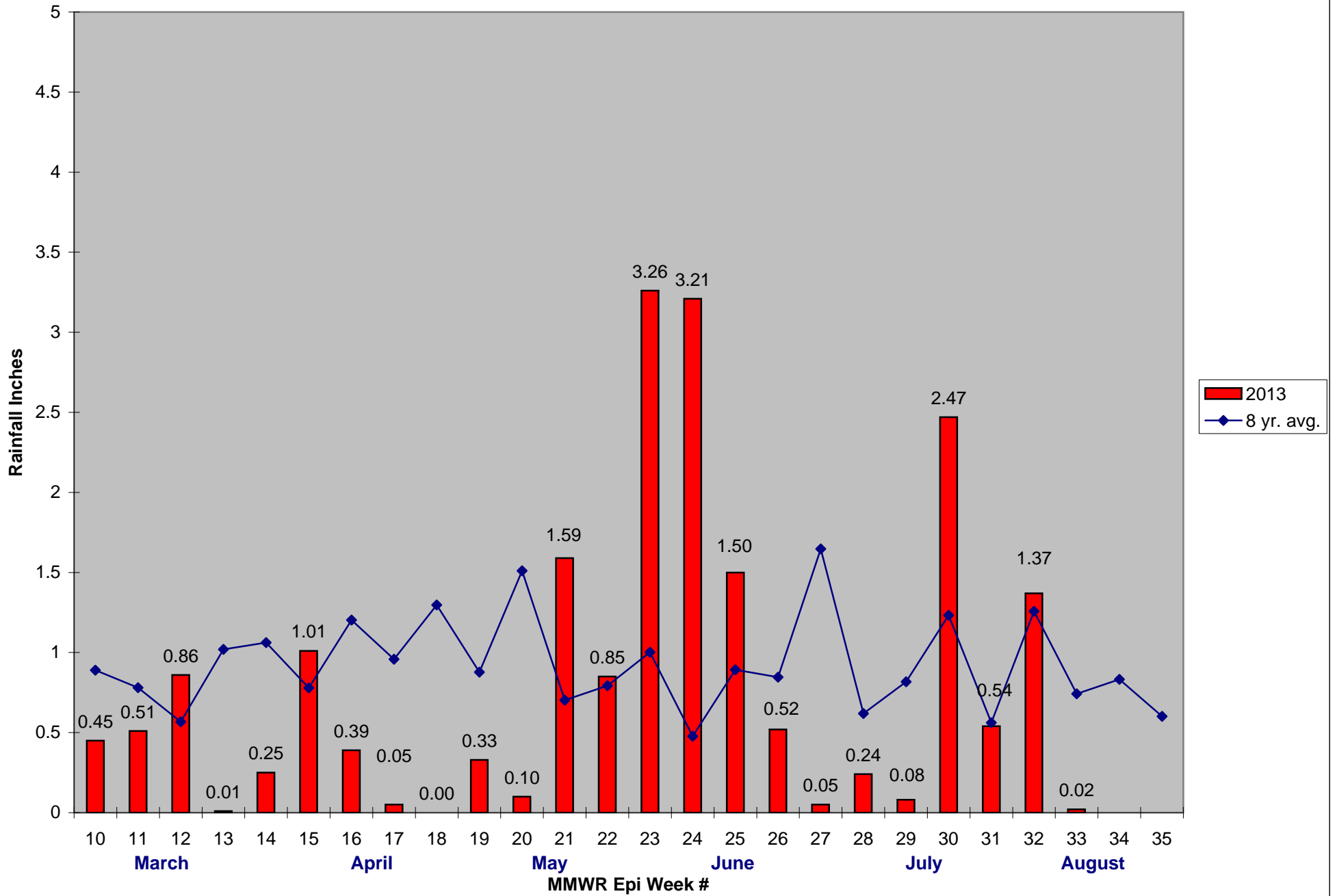
The predominant mosquito for the week was *Coquillettidia perturbans*, followed by *Culex* Species.

**2013 Mass. Rainfall Data vs. 33 Year Average\***



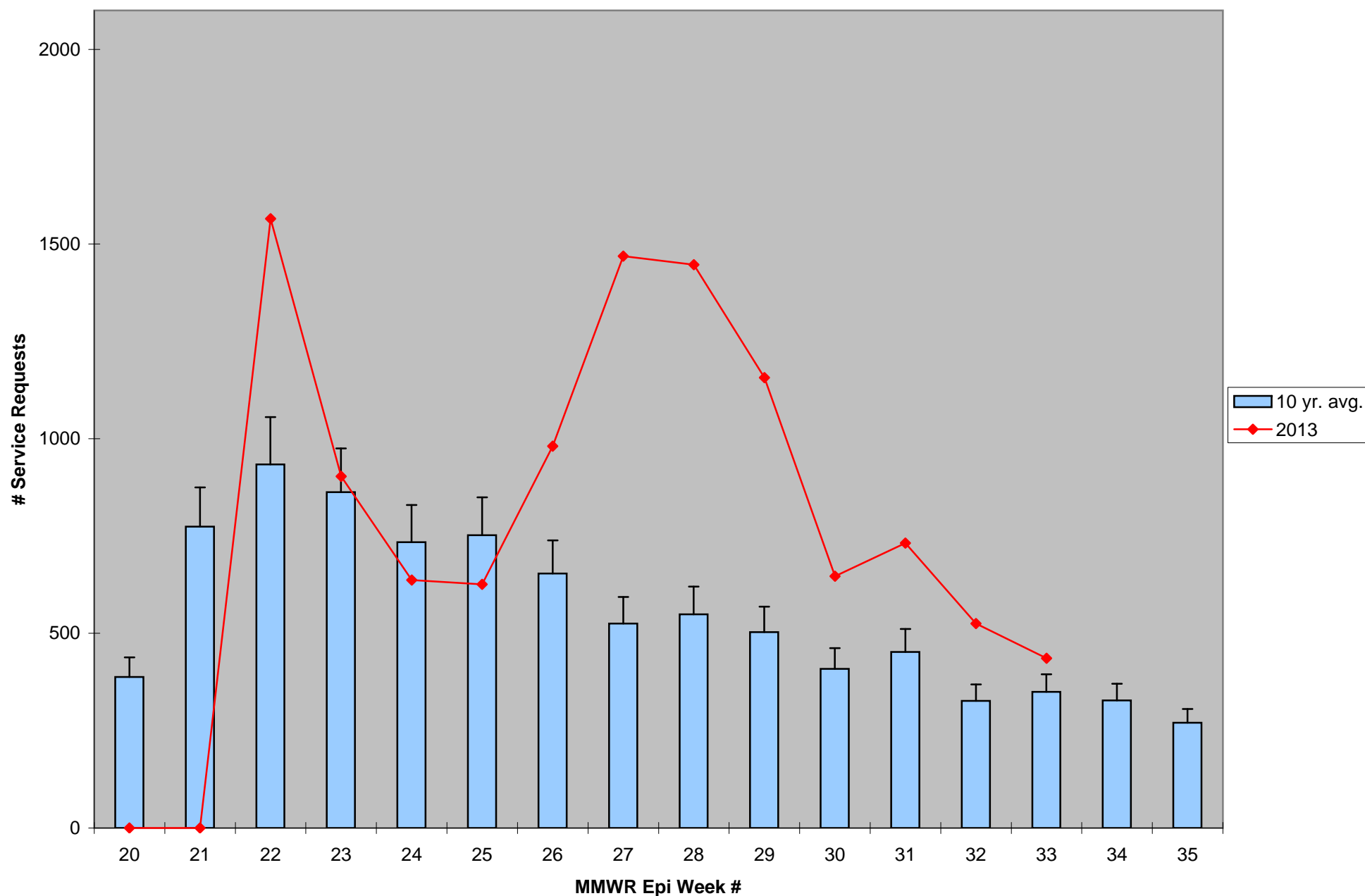
\*Source: Northeast Regional Climate Center: [http://www.nrcc.cornell.edu/page\\_summaries.html](http://www.nrcc.cornell.edu/page_summaries.html)

2013 CMMCP Weekly Rainfall vs. 8 Year Average\*



\*Source: CMMCP Weather Station - Northborough, MA

# ULV Service Request History Comparison 2003-2013



Error bars show approx. number of requests if we had 40 cities and towns over the 10 year average

2013 Rainfall vs. Requests

