

CMMCP WEEKLY SURVEILLANCE REPORT



EPI week #34
Aug. 19 – 25, 2012

Frank Cornine, *Field Biologist*
Curtis Best, *Staff Entomologist*
Juliana Miller, *Entomologist*
Tim McGlinchy, *Director of Operations*
Tim Deschamps, *Executive Director*

Central Mass. Mosquito Control Project
Weekly Report- 8/19/12-8/25/12
EPI Week #34

Cumulative Surveillance Summary

Target Species	<i>Ae. vex</i>	<i>Cq. per</i>	<i>Cs. mel</i>	<i>Oc. can</i>	<i>Culex</i>	All Species
No. Pools	41	282	214	88	796	2335
Total Specimens	169	8048	1633	386	18029	31635
No. Pools WNV +	0	1 [†]	1 [†]	0	30 [†]	32 [†]
No. Pools EEE +	0	2 [†]	2 [†]	0	2 [†]	6 [†]

- [†]Pool of EEE+ *Culex* Species collected in Westborough on 7/17/12
- [†]Pool of WNV+ *Culex* Species collected in Shrewsbury on 7/18/12
- [†]Pool of WNV+ *Culex* Species collected in Tewksbury on 7/20/12
- [†]Pool of WNV+ *Culex* Species collected in Westford on 7/25/12
- [†]Pool of WNV+ *Culex* Species collected in Chelmsford on 7/25/12
- [†]Pool of EEE+ *Culex* Species collected in Westborough on 7/27/12
- [†]Pool of WNV+ *Culex* Species collected in Westborough on 7/31/12
- [†]Pool of WNV+ *Culex* Species collected in Boylston on 7/31/12
- [†]Pool of WNV+ *Culex* Species collected in Fitchburg on 7/31/12
- [†]Pool of EEE+ *Culiseta melanura* collected in Westborough on 8/2/12
- [†]Pool of WNV+ *Culex* Species collected in Chelmsford on 8/2/12
- [†]Pool of WNV+ *Culex* Species collected in Dracut on 8/3/12
- [†]Pool of WNV+ *Culex* Species collected in Leominster on 8/3/12
- Pool of WNV+ *Culex pipiens/restuans* collected in Worcester on 8/3/10 (DPH collection)
- [†]Pool of WNV+ *Culex* Species collected in Dracut on 8/7/12
- [†]Pool of WNV+ *Culex* Species collected in Millbury on 8/7/12
- [†]Pool of WNV+ *Culex* Species collected in Lunenburg on 8/7/12
- [†]Pool of WNV+ *Culiseta melanura* collected in Wilmington on 8/7/12
- [†]Pool of WNV+ *Culex* Species collected in Berlin on 8/8/12
- [†]Pool of WNV+ *Culex* Species collected in Shrewsbury on 8/9/12
- [†]Pool of WNV+ *Culex* Species collected in Hopedale on 8/9/12
- [†]Pool of EEE+ *Culiseta melanura* collected in Westborough on 8/9/12
- [†]Pool of EEE+ *Coquillettidia perturbans* collected in Westborough on 8/9/12
- [†]Pool of WNV+ *Culex* Species collected in Northborough on 8/10/12
- [†]Pool of WNV+ *Culex* Species collected in Marlborough on 8/14/12
- [†]Pool of WNV+ *Culex* Species collected in Hudson on 8/14/12
- [†]Pool of EEE+ *Coquillettidia perturbans* collected in Hopkinton on 8/14/12
- [†]Pool of WNV+ *Culex* Species collected in Westborough on 8/14/12
- [†]Pool of WNV+ *Culex* Species collected in Ashland on 8/14/12
- [†]Pool of WNV+ *Culex* Species collected in Hopkinton on 8/14/12
- [†]Pool of WNV+ *Culex* Species collected in Auburn on 8/15/12
- [†]Pool of WNV+ *Culex* Species collected in Auburn on 8/15/12
- [†]Pool of WNV+ *Culex* Species collected in Blackstone on 8/16/12
- [†]Pool of WNV+ *Culex* Species collected in Westford on 8/16/12
- [†]Pool of WNV+ *Culex* Species collected in Billerica on 8/16/12

†Pool of WNV+ *Culex* Species collected in Chelmsford on 8/16/12

†Pool of WNV+ *Coquillettidia perturbans* collected in Millbury on 8/17/12

†Pool of WNV+ *Culex* Species collected in Tewksbury on 8/17/12

†Pool of WNV+ *Culex* Species collected in Leominster on 8/17/12

Weather Summary (Northborough, MA): The weather for this particular week averaged 70.49°F with a recorded high temperature of 86.1°F and a recorded low temperature of only 53.4°F. For this week there was also a total of 0.09 inches of rain observed. Compared to the previous week, it was approximately 2.01°F cooler on average, and rained about 0.18 inches less. There has been 1.57 inches of rain accumulated in August, while the total rainfall for the month of July was 2.48 inches at the CMMCP weather station (2.78" statewide avg.). For the year we have received 42% more requests than average; 11,109 requests to date compared to the 9 year average of 7,824. Requests were 7% less than the 2011 totals for the same time frame, 11,901 in 2011 against 11,109 in 2012. Service requests increased 25% from EPI week 33 to Epi week 34 for 2012 (718 vs. 899).

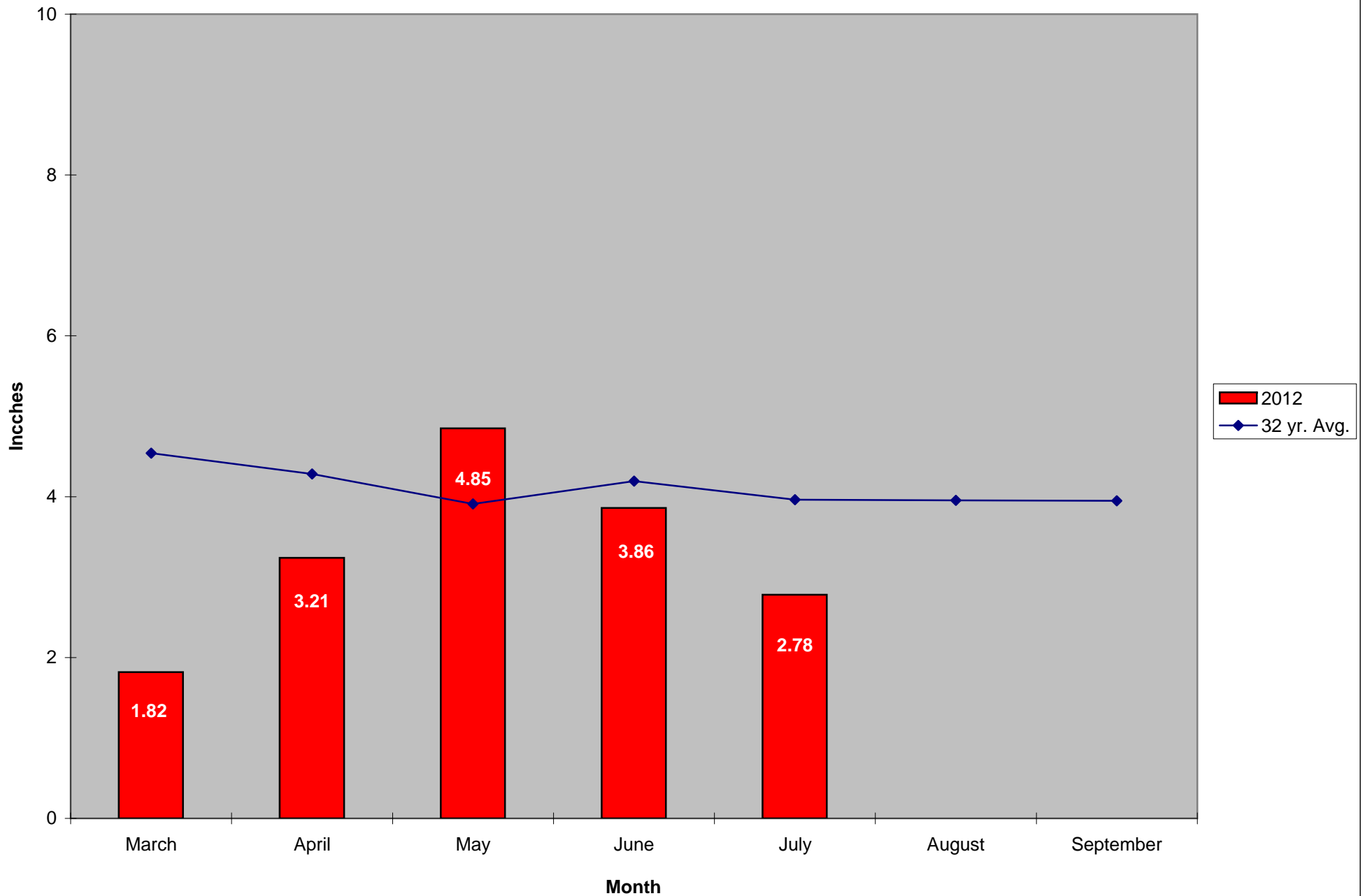
CMMCP Mosquito Summary-

Target Species	Δ From Last Week	Δ From Last Year	Predominant Trap Site(s)
-----------------------	-----------------------------	-----------------------------	---------------------------------

<i>Aedes vexans</i>	+200.0%	-94.74%	Uxbridge, Northbridge
<i>Coquillettidia perturbans</i>	-47.90%	+55.00%	Millbury, Lunenburg
<i>Culiseta melanura</i>	+00.00%	+36.00%	Westborough, Leominster
<i>Ochlerotatus canadensis</i>	-50.00%	+100.0%	Berlin, Westborough
<i>Culex</i> Species	-59.33%	+29.88%	Auburn, Boxborough
All Species	-52.76%	+19.05%	Auburn, Boxborough

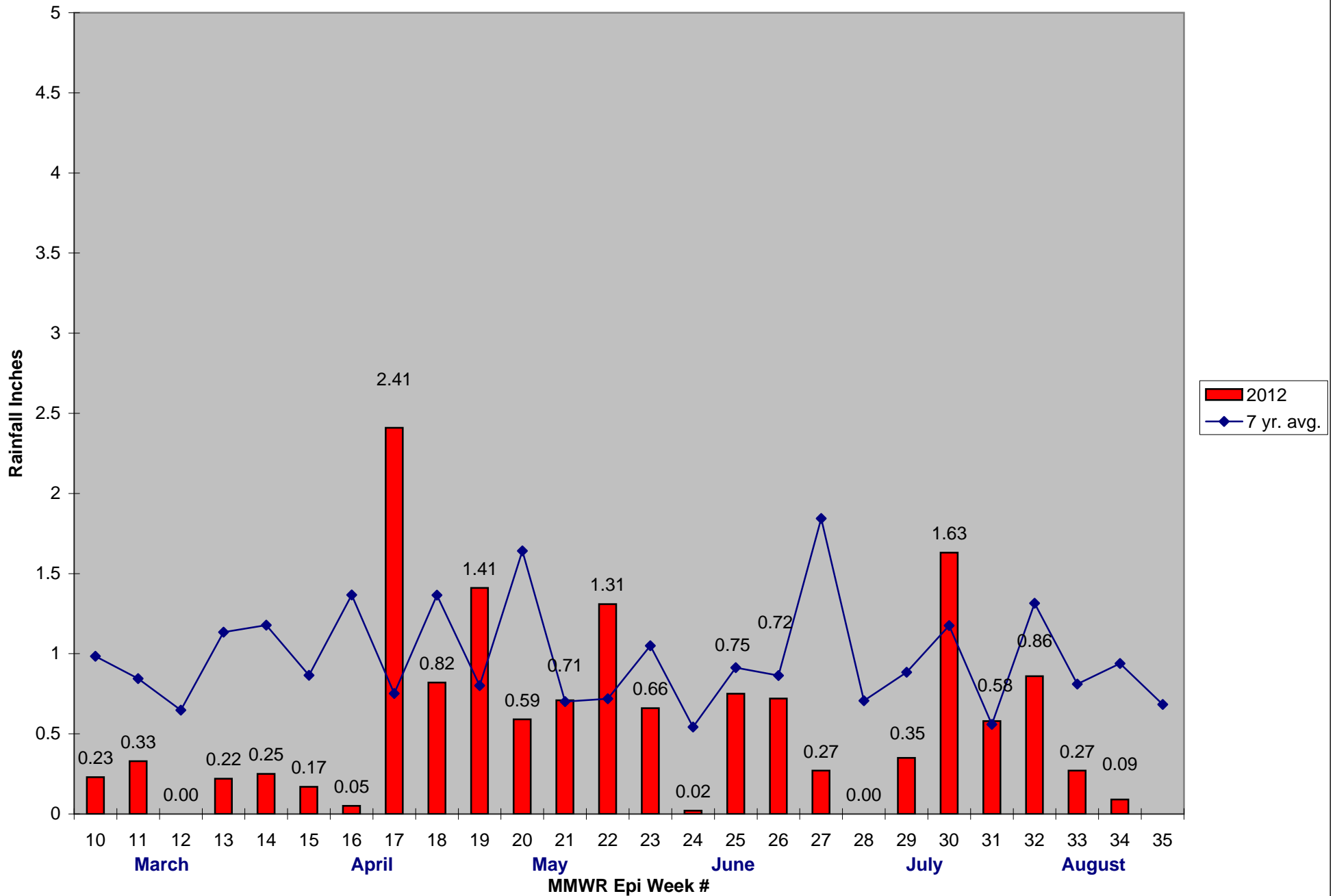
The predominant mosquito for the week was *Culex* Species,
followed by *Coquillettidia perturbans*.

2012 Mass. Rainfall Data vs. 32 Year Average*



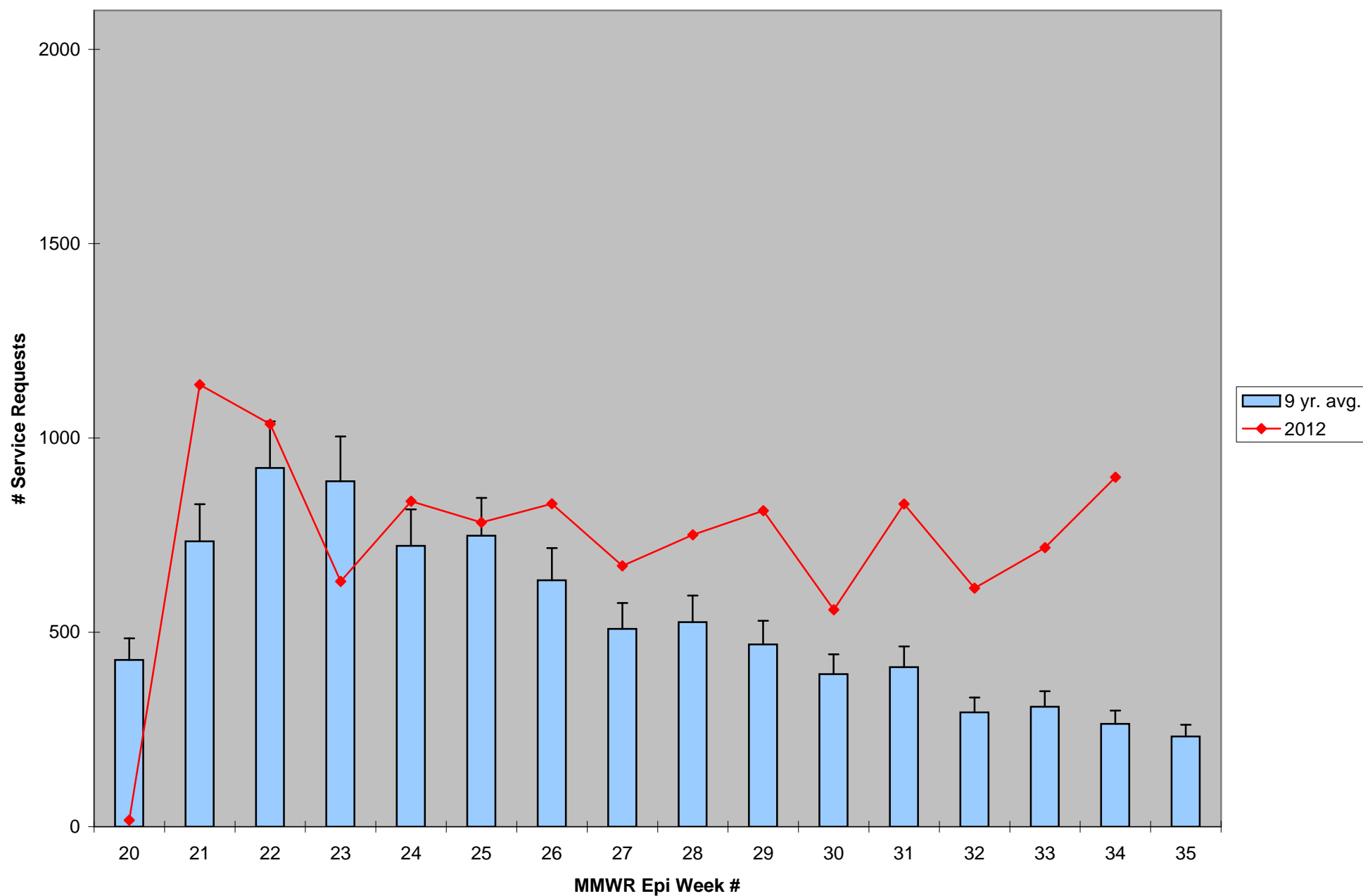
*Source: Northeast Regional Climate Center: http://www.nrcc.cornell.edu/page_summaries.html

2012 CMMCP Weekly Rainfall vs. 7 Year Average*



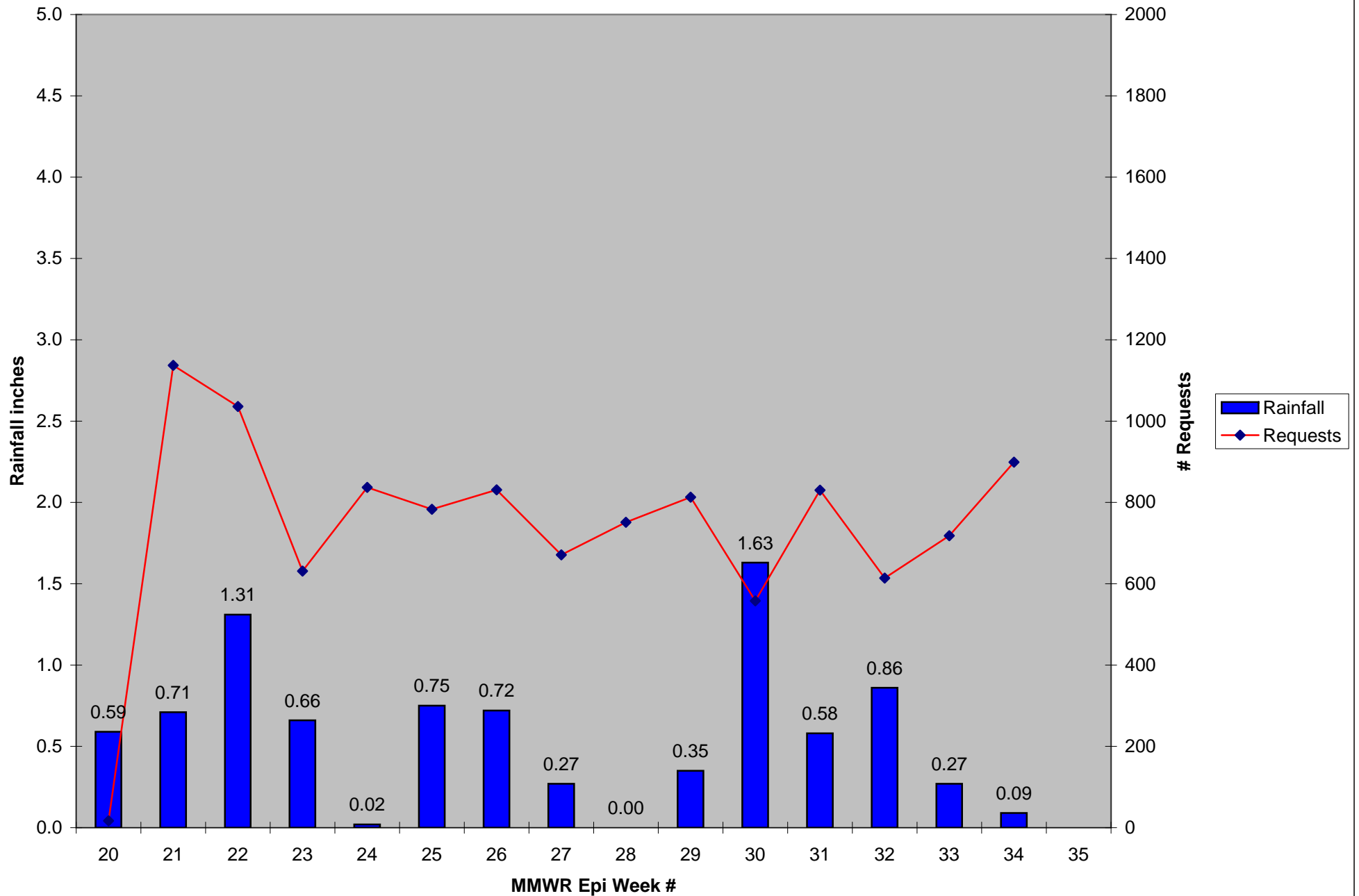
*Source: CMMCP Weather Station - Northborough, MA

ULV Service Request History Comparison 2003-2012



Error bars show approx. number of requests if we had 40 cities and towns over the 9 year average

2012 Rainfall vs. Requests



2012 Temp vs. Requests

