

# CMMCP WEEKLY SURVEILLANCE REPORT



**EPI week #34**  
**Aug. 18-24, 2013**

**Frank Cornine**, *Field Biologist*  
**Curtis Best**, *Staff Entomologist*  
**Juliana Miller**, *Entomologist*  
**Tim McGlinchy**, *Director of Operations*  
**Tim Deschamps**, *Executive Director*

**Central Mass. Mosquito Control Project**  
**Weekly Report- 8/18/13-8/24/13**  
**EPI Week #34**

**Cumulative Surveillance Summary**

| <b>Target Species</b>  | <b><i>Ae. vex</i></b> | <b><i>Cq. per</i></b> | <b><i>Cs. mel</i></b> | <b><i>Oc. can</i></b> | <b><i>Culex</i></b> | <b>All Species</b> |
|------------------------|-----------------------|-----------------------|-----------------------|-----------------------|---------------------|--------------------|
| <b>No. Pools</b>       | 110                   | 252                   | 166                   | 134                   | 618                 | 2282               |
| <b>Total Specimens</b> | 1410                  | 10345                 | 1113                  | 1386                  | 7141                | 24194              |
| <b>No. Pools WNV +</b> | 0                     | 0                     | 0                     | 0                     | 7 <sup>†</sup>      | 7 <sup>†</sup>     |
| <b>No. Pools EEE +</b> | 0                     | 0                     | 0                     | 0                     | 0                   | 0                  |

<sup>†</sup>Pool of WNV+ *Culex* Species collected in Holliston on 8/1/13

<sup>†</sup>Pool of WNV+ *Culex* Species collected in Tewksbury on 8/2/13

<sup>†</sup>Pool of WNV+ *Culex* Species collected in Chelmsford on 8/7/13

<sup>†</sup>Pool of WNV+ *Culex* Species collected in Shrewsbury on 8/9/13

<sup>†</sup>Pool of WNV+ *Culex* Species collected in Boxborough on 8/9/13

<sup>†</sup>Pool of WNV+ *Culex* Species collected in Millbury on 8/13/13

<sup>†</sup>Pool of WNV+ *Culex* Species collected in Westborough on 8/13/13

**Weather Summary (Northborough, MA):** The weather for this particular week averaged 71.10°F with a recorded high temperature of 87.80°F and a recorded low temperature of only 52.00°F. For this week there was also a total of 0.00 inches of rain observed. Compared to the previous week, it was approximately 4.23°F warmer on average, and rained about 0.02 inches less. There has been 1.92 inches of rain accumulated in August, while the total rainfall for the month of July was 2.85 inches.

West Nile Virus was identified in 2 CMMCP member communities In Epi week 34 (collections from Epi week 33), all in *Culex* mosquitoes. An application in Westboro was performed Aug. 21 & 22 after consultation with the local BOH. Additional surveillance traps were placed in the area. An application in Millbury is scheduled for Aug. 27 after consultation Millbury Board of Health. Additional surveillance is being gathered. Additional information on our vector events is available at this link: <http://www.cmmcp.org/2013vector.htm>. Press releases were issued by each community and numerous media outlets reported this information. Out catch basin program for the control of *Culex* larvae is winding down, with 50,893 basins treated to date in 40 member communities.

For the year we have received 43.9% more requests than average; 11,739 requests to date compared to the 10 year average of 8,153. Requests were 5.67% more than the 2012 totals for the same time frame, 11,109 in 2012 against 11,739 in 2013. Service requests increased 41% from EPI week 33 to Epi week 34 in 2013 (436 vs. 614) most likely due to increased media coverage of mosquito-borne virus confirmations.

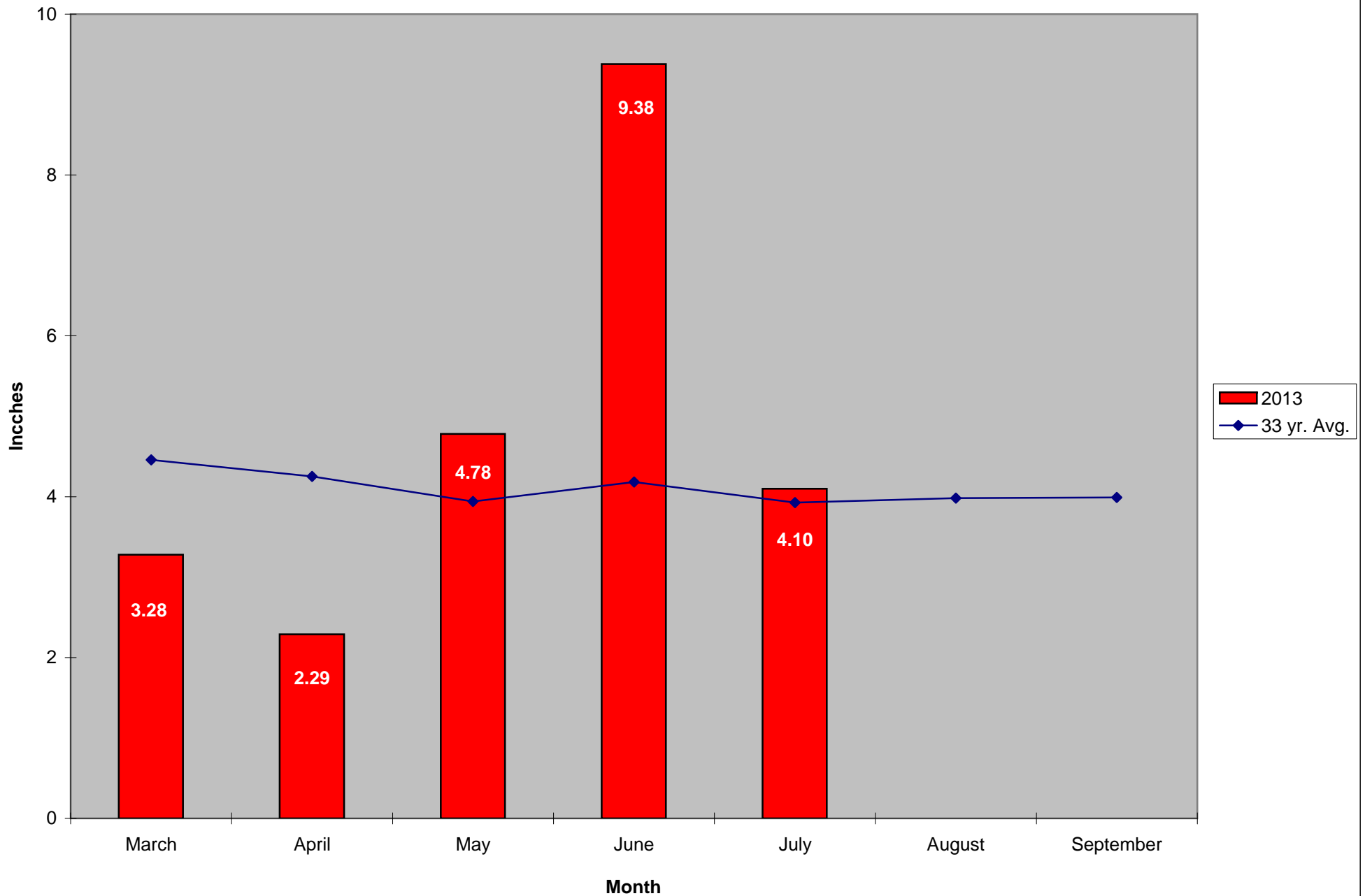
**CMMCP Mosquito Summary\*-**

| Target Species                   | $\Delta$ From<br>Last Week | $\Delta$ From<br>Last Year | Predominant Trap Site(s)     |
|----------------------------------|----------------------------|----------------------------|------------------------------|
| <i>Aedes vexans</i>              | -50.00%                    | +200.0%                    | Dracut                       |
| <i>Coquillettidia perturbans</i> | +33.33%                    | +9900%                     | Tewksbury, Holliston         |
| <i>Culiseta melanura</i>         | -65.22%                    | +00.00%                    | Fitchburg                    |
| <i>Ochlerotatus canadensis</i>   | -87.50%                    | +100.0%                    | Hopedale, Fitchburg          |
| <i>Culex</i> Species             | +39.44%                    | +661.5%                    | Tewksbury, Wilmington        |
| All Species                      | +2.040%                    | +753.7%                    | Holliston, Fitchburg, Dracut |

The predominant mosquito for the week was *Coquillettidia perturbans*, followed by *Culex* Species.

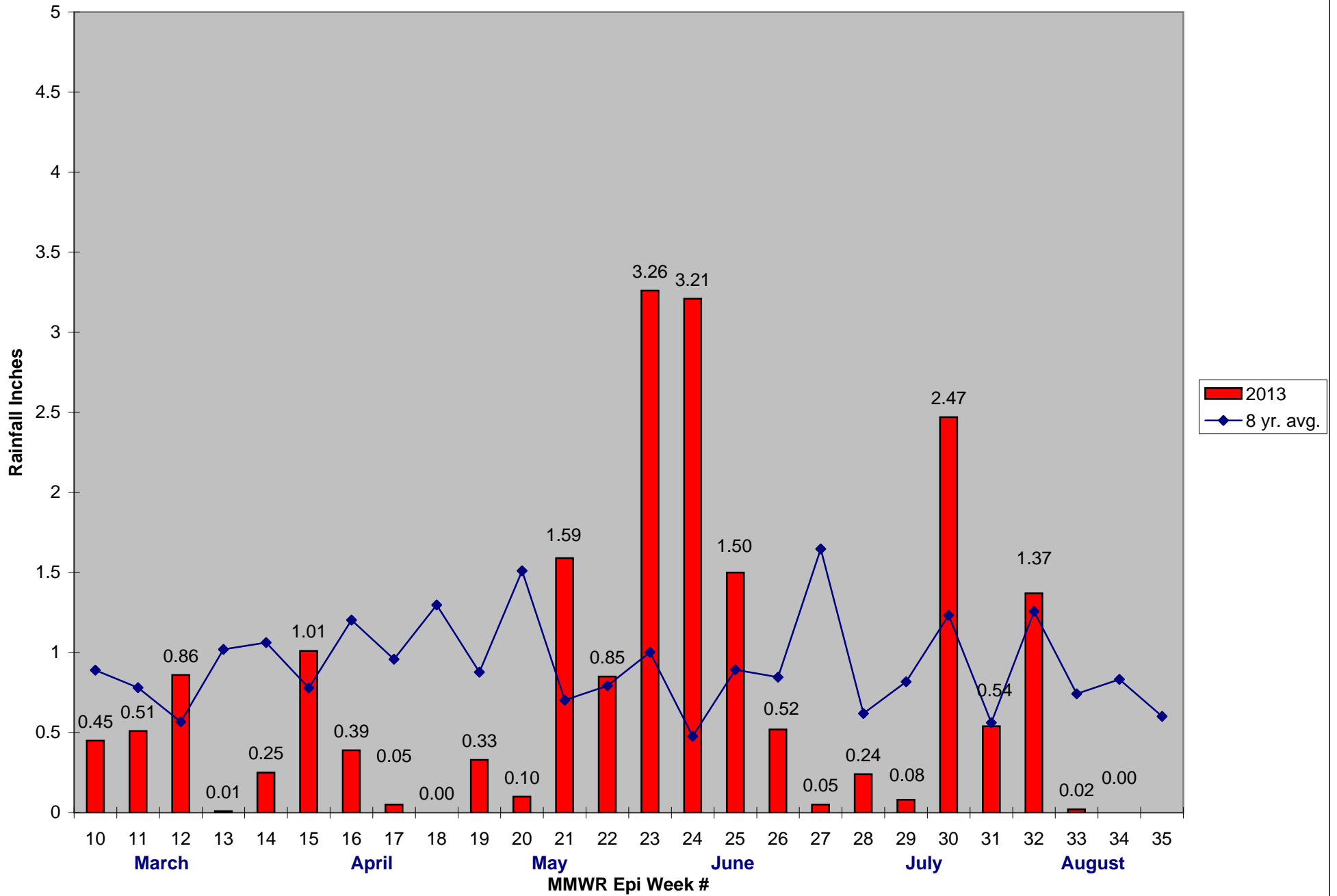
\* Seasonal numbers may contribute to these comparisons being not as significant as they appear

### 2013 Mass. Rainfall Data vs. 33 Year Average\*



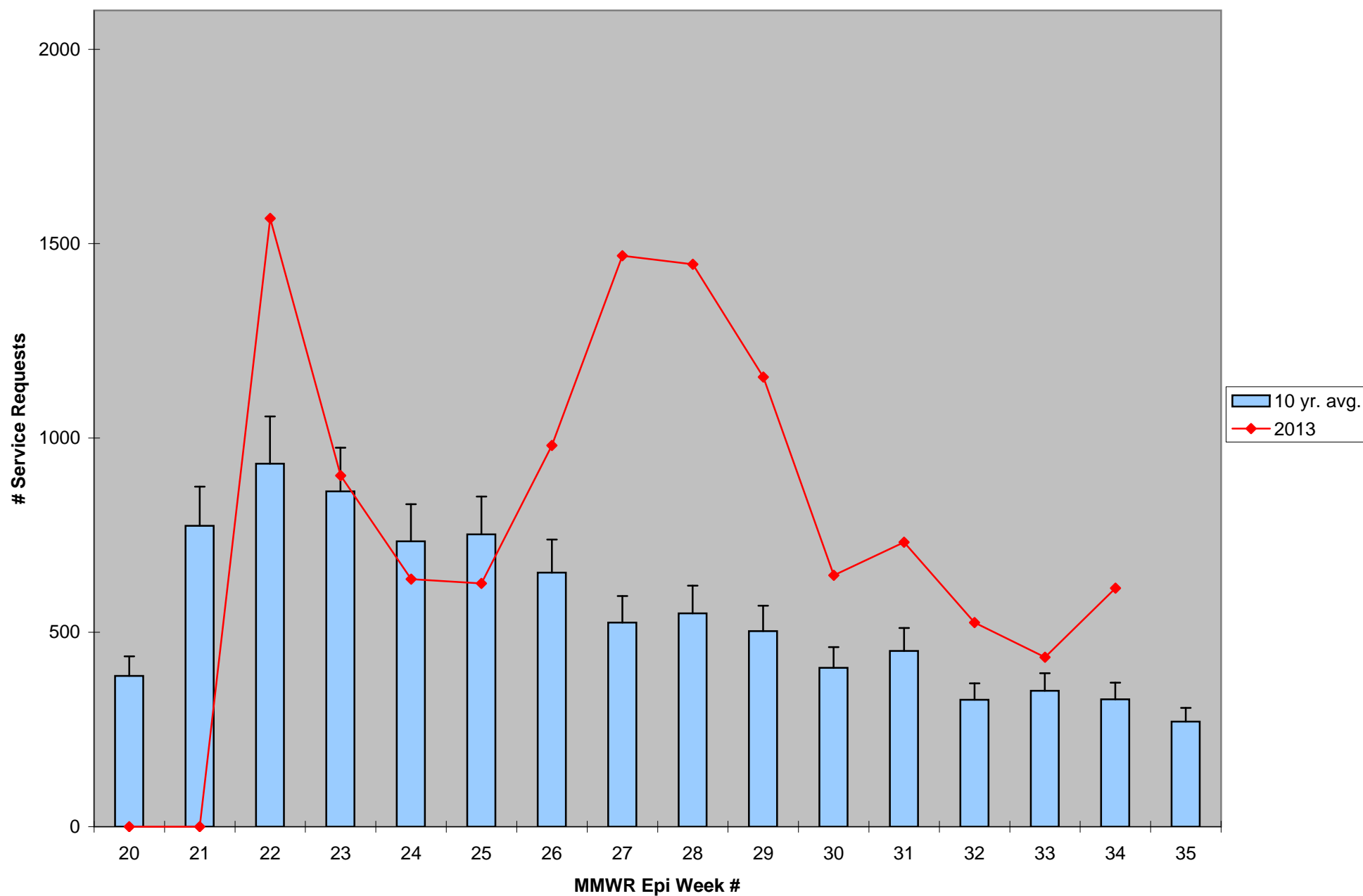
\*Source: Northeast Regional Climate Center: [http://www.nrcc.cornell.edu/page\\_summaries.html](http://www.nrcc.cornell.edu/page_summaries.html)

2013 CMMCP Weekly Rainfall vs. 8 Year Average\*



\*Source: CMMCP Weather Station - Northborough, MA

## ULV Service Request History Comparison 2003-2013



Error bars show approx. number of requests if we had 40 cities and towns over the 10 year average

2013 Rainfall vs. Requests

