

CMMCP WEEKLY SURVEILLANCE REPORT



EPI week #35
Aug. 25-31, 2013

Frank Cornine, *Field Biologist*
Curtis Best, *Staff Entomologist*
Juliana Miller, *Entomologist*
Tim McGlinchy, *Director of Operations*
Tim Deschamps, *Executive Director*

Central Mass. Mosquito Control Project
Weekly Report- 8/25/13-8/31/13
EPI Week #35

Cumulative Surveillance Summary

Target Species	<i>Ae. vex</i>	<i>Cq. per</i>	<i>Cs. mel</i>	<i>Oc. can</i>	<i>Culex</i>	All Species
No. Pools	128	289	177	141	656	2432
Total Specimens	1717	11613	1183	1407	7714	26516
No. Pools WNV +	0	0	0	0	7 [†]	7 [†]
No. Pools EEE +	0	0	0	0	0	0

[†]Pool of WNV+ *Culex* Species collected in Holliston on 8/1/13

[†]Pool of WNV+ *Culex* Species collected in Tewksbury on 8/2/13

[†]Pool of WNV+ *Culex* Species collected in Chelmsford on 8/7/13

[†]Pool of WNV+ *Culex* Species collected in Shrewsbury on 8/9/13

[†]Pool of WNV+ *Culex* Species collected in Boxborough on 8/9/13

[†]Pool of WNV+ *Culex* Species collected in Millbury on 8/13/13

[†]Pool of WNV+ *Culex* Species collected in Westborough on 8/13/13

Weather Summary (Northborough, MA): The weather for this particular week averaged 70.91°F with a recorded high temperature of 87.70°F and a recorded low temperature of only 50.40°F. For this week there was also a total of 0.24 inches of rain observed. Compared to the previous week, it was approximately 0.19°F cooler on average, and rained about 0.24 inches more. There has been 2.16 inches of rain accumulated in August, while the total rainfall for the month of July was 2.85 inches.

No EEE or West Nile Virus was identified in CMMCP member communities In Epi week 35 (collections from Epi week 34).

For the year we have received 47.7% more requests than average; 12,140 requests to date compared to the 10 year average of 8,215. Requests were 3.53% more than the 2012 totals for the same time frame, 11,725 in 2012 against 12,140 in 2013. Service requests dropped dramatically (52%) from EPI week 34 to Epi week 35 in 2013 (614 vs. 401).

The standard adulticide program responding to service calls from residents will end Sept. 5 due to substantially decreasing calls for this program; adult mosquito surveillance will continue and if virus is confirmed then response(s) including adulticiding if appropriate will be coordinated with state and local officials.

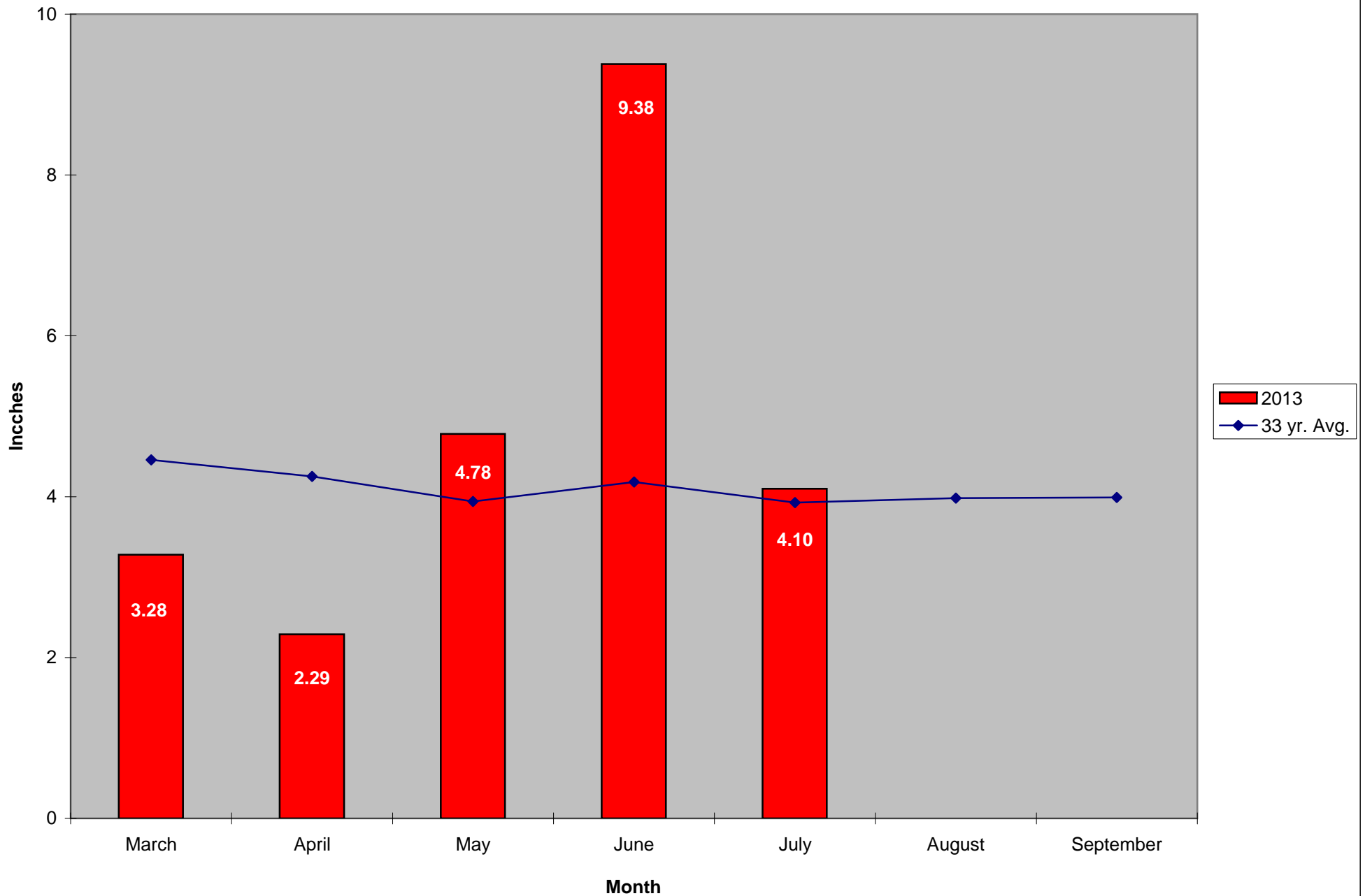
CMMCP Mosquito Summary-

Target Species	Δ From Last Week	Δ From Last Year*	Predominant Trap Site(s)
<i>Aedes vexans</i>	+200.0%	+500.0%	Northbridge, Hudson
<i>Coquillettidia perturbans</i>	-1.500%	+3840%	Millbury, Westborough
<i>Culiseta melanura</i>	+125.0%	+3500%	Millbury
<i>Ochlerotatus canadensis</i>	+00.00%	+00.00%	Marlborough, Sturbridge
<i>Culex</i> Species	-70.71%	+93.33%	Tewksbury, Westborough
All Species	-18.00%	+1204%	Millbury, Westborough

The predominant mosquito for the week was *Coquillettidia perturbans*, followed by *Culex* Species.

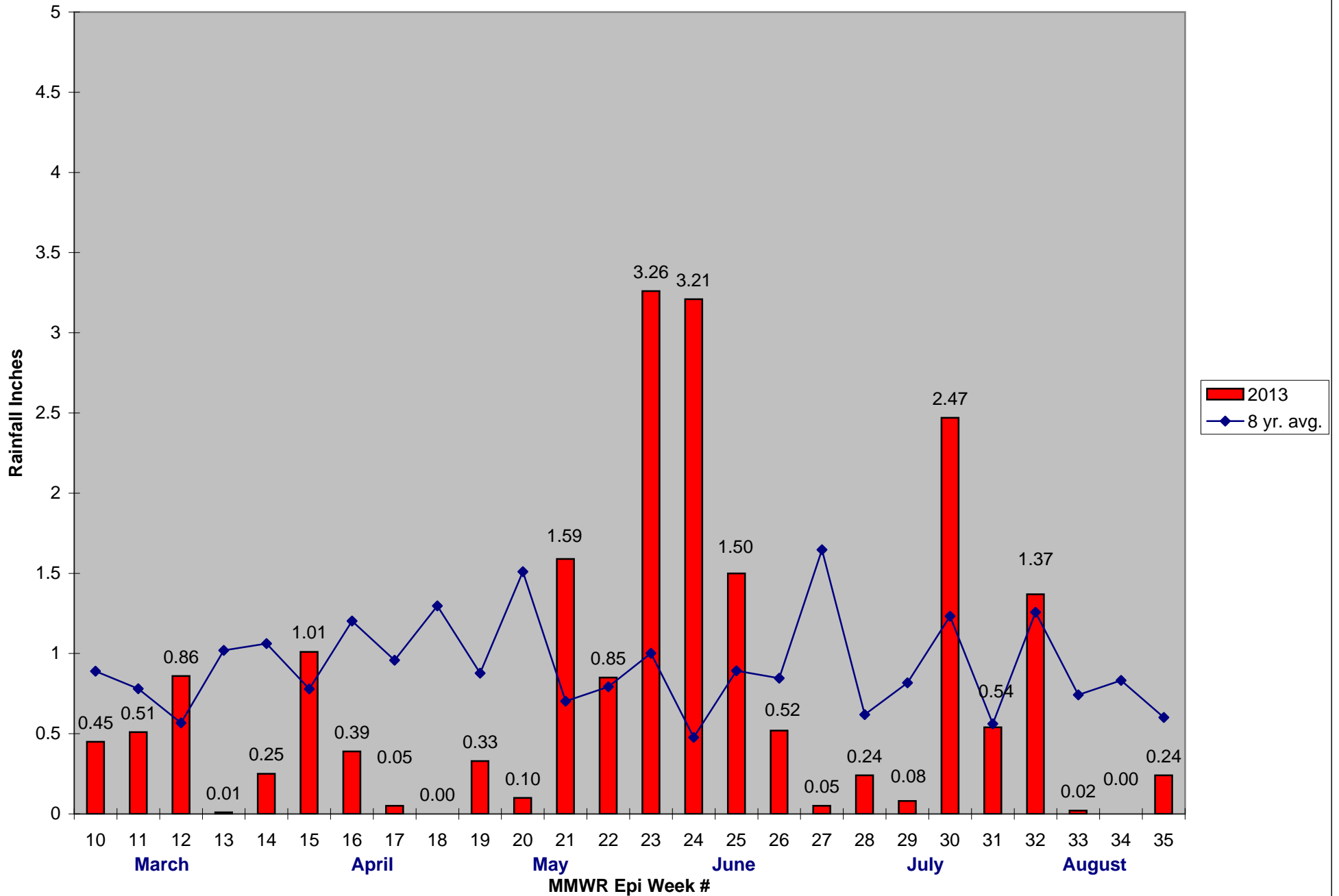
*Seasonal numbers may contribute to these comparisons being not as significant as they appear

2013 Mass. Rainfall Data vs. 33 Year Average*



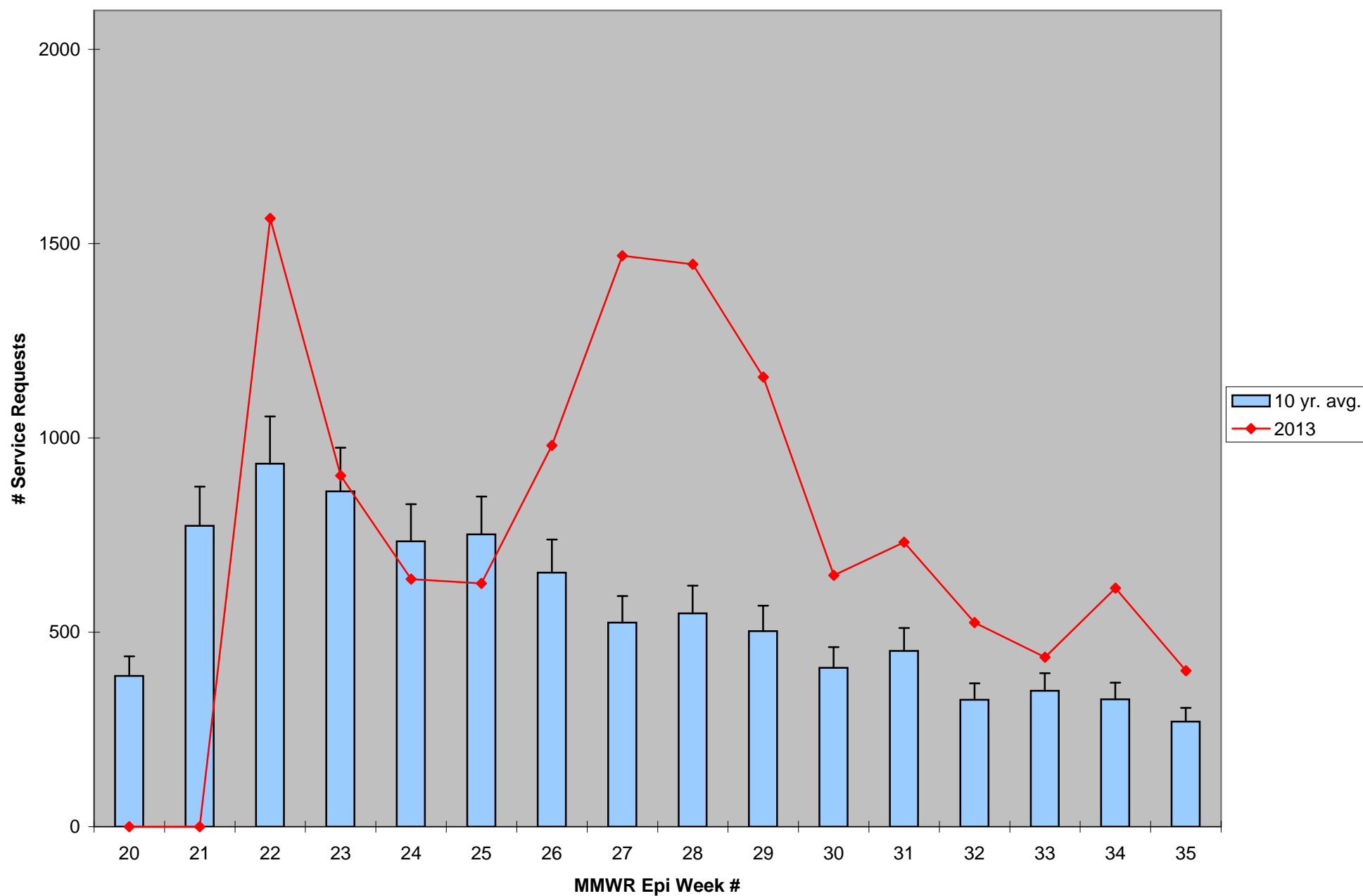
*Source: Northeast Regional Climate Center: http://www.nrcc.cornell.edu/page_summaries.html

2013 CMMCP Weekly Rainfall vs. 8 Year Average*



*Source: CMMCP Weather Station - Northborough, MA

ULV Service Request History Comparison 2003-2013



Error bars show approx. number of requests if we had 40 cities and towns over the 10 year average

2013 Rainfall vs. Requests

