

# CMMCP WEEKLY SURVEILLANCE REPORT



**EPI week #35**  
**Aug. 30 – Sept. 5, 2015**

**Frank Cornine, *Field Biologist***  
**Curtis Best, *Staff Entomologist***  
**Todd Duval, *Field Biologist***  
**Tim McGlinchy, *Director of Operations***  
**Tim Deschamps, *Executive Director***

**Central Mass. Mosquito Control Project**  
**Weekly Report- 8/30/15-9/5/15**  
**EPI Week #35**

**Cumulative Surveillance Summary**

Target Species	<i>Ae. vex</i>	<i>Cq. per</i>	<i>Cs. mel</i>	<i>Oc. can</i>	<i>Culex</i>	All Species
No. Pools	204	574	141	227	823	3429
Total Specimens	1863	35353	1101	4814	16285	72072
No. Pools WNV +	0	0	0	0	1 <sup>†</sup>	1 <sup>†</sup>
No. Pools EEE +	0	0	0	0	0	0

<sup>†</sup>Pool of WNV+ *Culex pipiens/restuans* complex collected in Clinton on 8/27/15

**Weather Summary (Northborough, MA):** The weather for EPI Week 35 averaged 72.8°F with a recorded high temperature of 90.7°F and a recorded low temperature of only 48.7°F. There was 0.0 inches of precipitation observed this week. Compared to the previous week, it was approximately 2.9°F warmer on average, and rained about 0.1 inches less. There has been 0.0 inches of rain accumulated in September, after 1.45 inches for the month of August.

**CMMCP Mosquito Summary-**

Target Species	Δ From Last Week	Δ From Last Year	Predominant Trap Site(s)
<i>Aedes vexans</i>	+00.00%	+00.00%	Westborough, Boylston
<i>Coquillettidia perturbans</i>	-89.83%	-89.29%	Webster, Sturbridge
<i>Culiseta melanura</i>	+20.00%	+20.00%	Tewksbury, Wilmington
<i>Ochlerotatus canadensis</i>	+00.00%	-100.0%	N/A
<i>Culex</i> Species	+121.4%	+287.5%	Chelmsford, Sturbridge
All Species	-22.11%	-16.85%	Westborough, Sturbridge

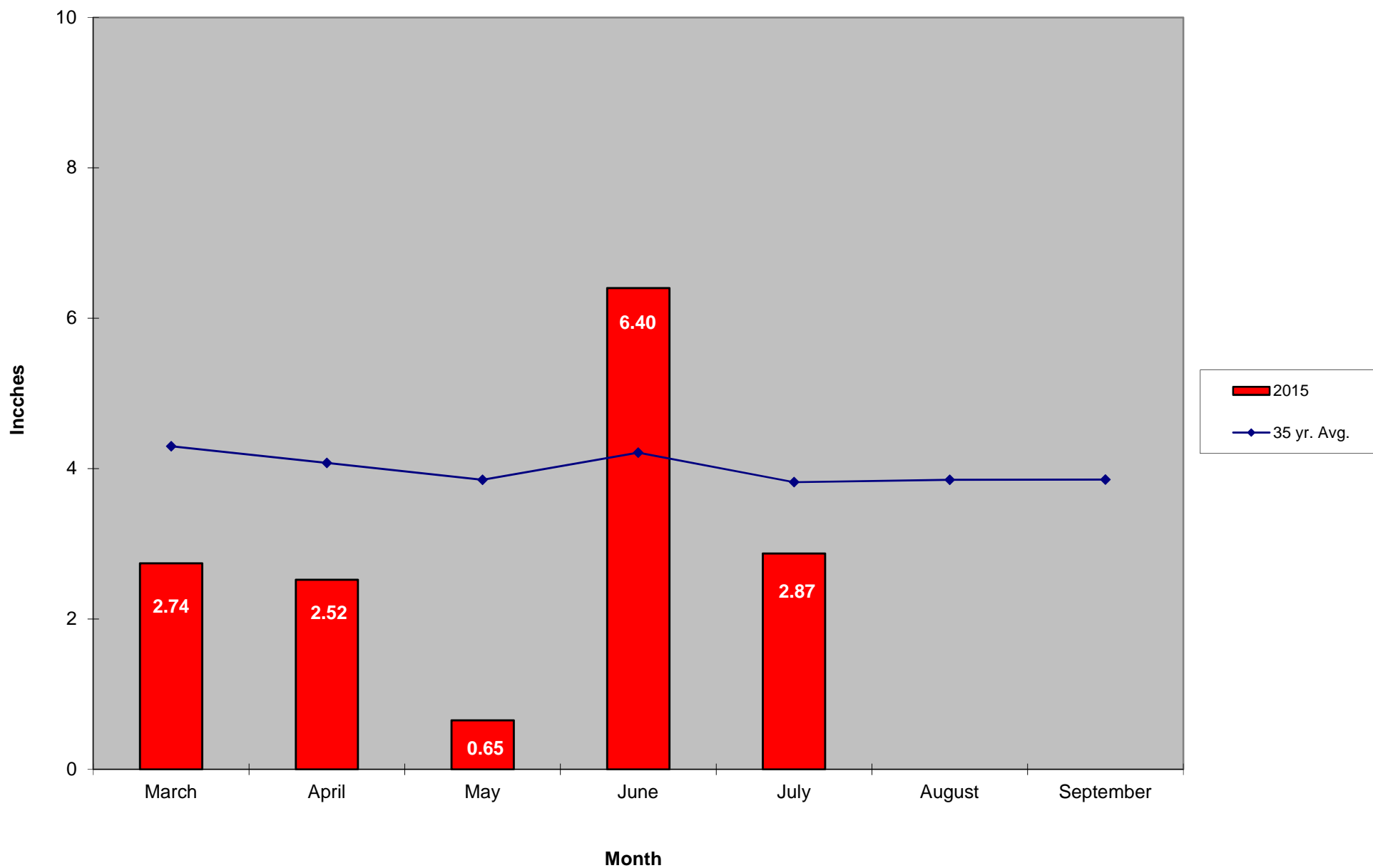
The predominant mosquito for the week was *Culex*  
followed by *Coquillettidia perturbans*.

**General narrative:**

The temperatures for EPI Week 35 averaged approximately 3°F warmer than the previous week, with zero precipitation observed. Overall collection numbers decreased by approximately 22% from EPI Week 34 at the historical surveillance trap sites. A significant decrease in *Coquillettidia perturbans* was the primary factor behind this reduction. *Culiseta melanura* and *Culex* spp. experienced increases, while *Aedes vexans* and *Ochlerotatus canadensis* decreased or remained steady. Compared to the 2014 season, the long-term surveillance locations showed an overall decrease of approximately 17%. *Culex* spp. was the most abundant species in the CMMCP service area with *Cq. perturbans* second.

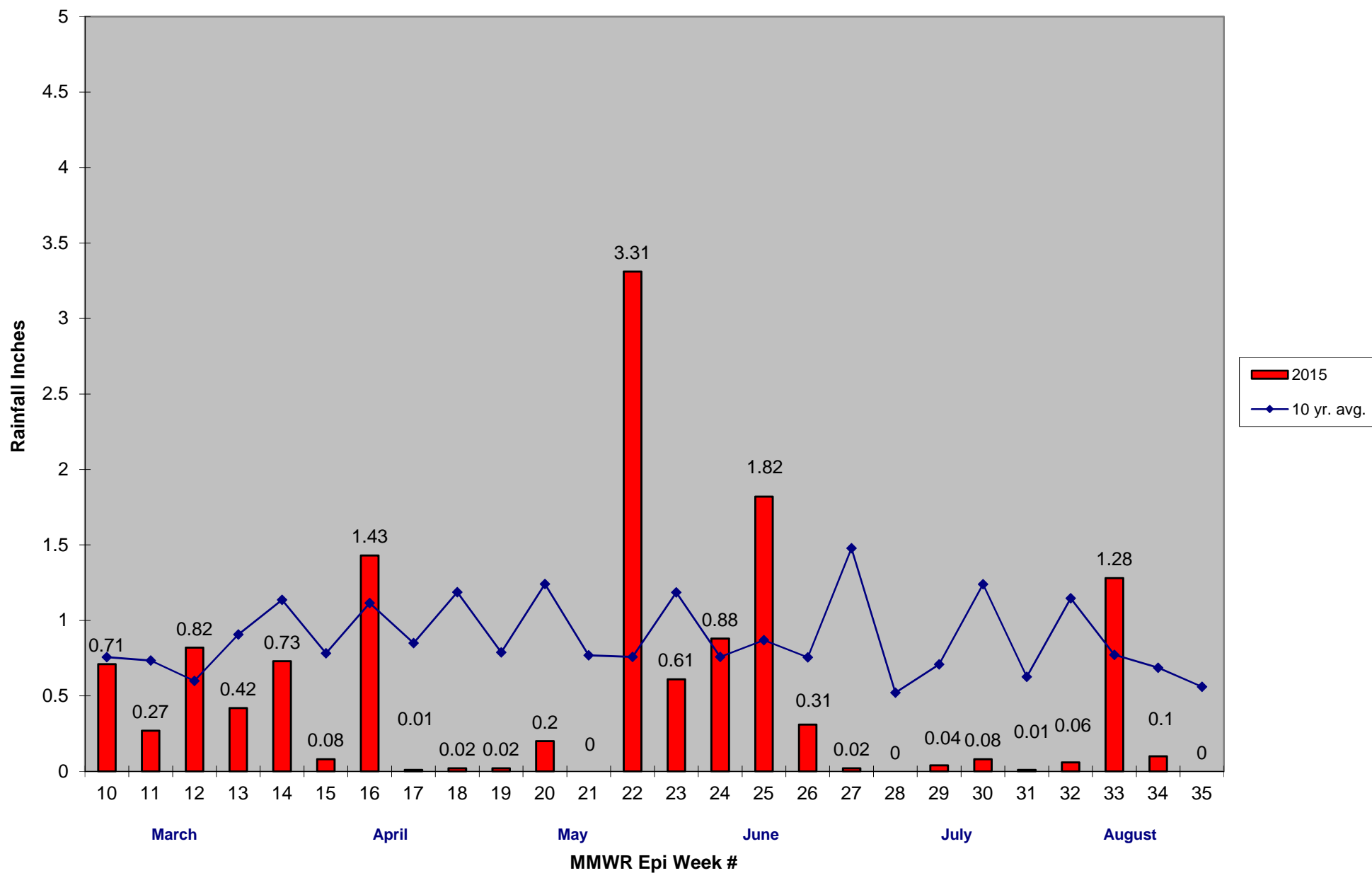
For the year we received 173% more service requests than average; 15,477 requests compared to the 12 year average of 8,901. 15,561 service calls have been completed despite weather conditions earlier in the season that cancelled or postponed operations. Catch basin treatments are underway in all member communities as a preemptive control for *Culex* and West Nile Virus. Our tire collection and ditch maintenance programs have restarted as time and personnel allow. West Nile Virus was detected in a pool of *Culex* mosquitoes in Hudson in the downtown area. Nearly 12 (11.7) linear miles were sprayed Sept. 3 after coordination with the Hudson Board of Health to lower populations of mosquitoes and related risk from disease transmission in the area. Supplemental trapping was performed in the area and catch basins treatments were treated/retreated to lower populations of *Culex*. Schools, recreational and other public areas in town will be scheduled for adulticiding as soon as possible.

### 2015 Mass. Rainfall Data vs. 35 Year Average\*



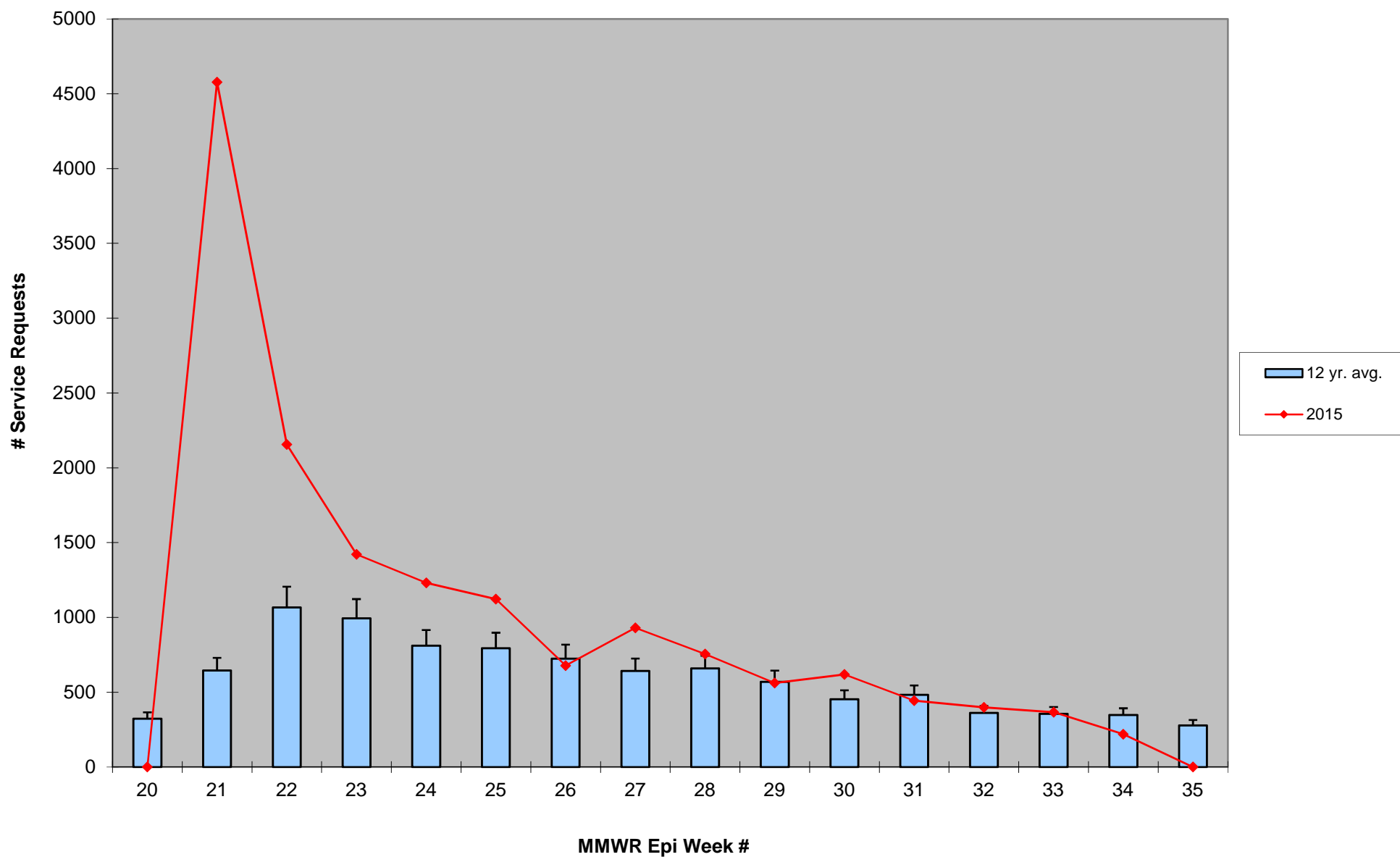
\*Source: [http://www.nrcc.cornell.edu/page\\_summaries.html](http://www.nrcc.cornell.edu/page_summaries.html)

## 2015 CMMCP Weekly Rainfall vs. 10 Year Average\*



\*Source: CMMCP weather station - Northborough, MA 01532

## ULV Service Request History Comparison 2003-2015



Error bars show approx. number of requests if we had 40 communities over the 12 year average

2015 Rainfall vs. Requests

