

# CMMCP WEEKLY SURVEILLANCE REPORT



**EPI week #35**  
**Aug. 26 - Sept. 1, 2007**

*Frank Cornine, Field Biologist*  
*Curtis Best, Staff Entomologist*  
*Tim McGlinchy, Director of Operations*  
*Tim Deschamps, Executive Director*

**Central Mass. Mosquito Control Project  
Weekly Report- 8/26/07-9/1/07  
MMWR Week #35**

**Cumulative Surveillance Summary**

<b>Target Species</b>	<b><i>Ae. vex</i></b>	<b><i>Cq. per</i></b>	<b><i>Cs. mel</i></b>	<b><i>Oc. can</i></b>	<b><i>Culex</i></b>	<b>All Species</b>
<b>No. Pools</b>	69	438	209	194	537	2659
<b>Total Specimens</b>	319	19893	1037	1091	7192	33068
<b>No. Pools WNV +</b>	0	0	0	0	2*	2*
<b>No. Pools EEE +</b>	0	0	0	0	0	0

\* Positive WNV pools of *Culex pipiens/restuans* found in:  
Marlborough DPH trap (set 7/29/07) & Holliston DPH trap (set 8/21/07)

**Weather Summary (Northborough, MA):** The weather for this week averaged 72.5°F, which was 6.14°F warmer than the prior week. The recorded high temperature was 90.5°F with a recorded low temperature of only 55.4°F. There was no recorded precipitation this week compared to 0.01 inches of rain observed last week. The rainfall total for the month of August was 1.10 inches (rainfall total for July was 6.07 inches).

**CMMCP Weekly Mosquito Summary-**

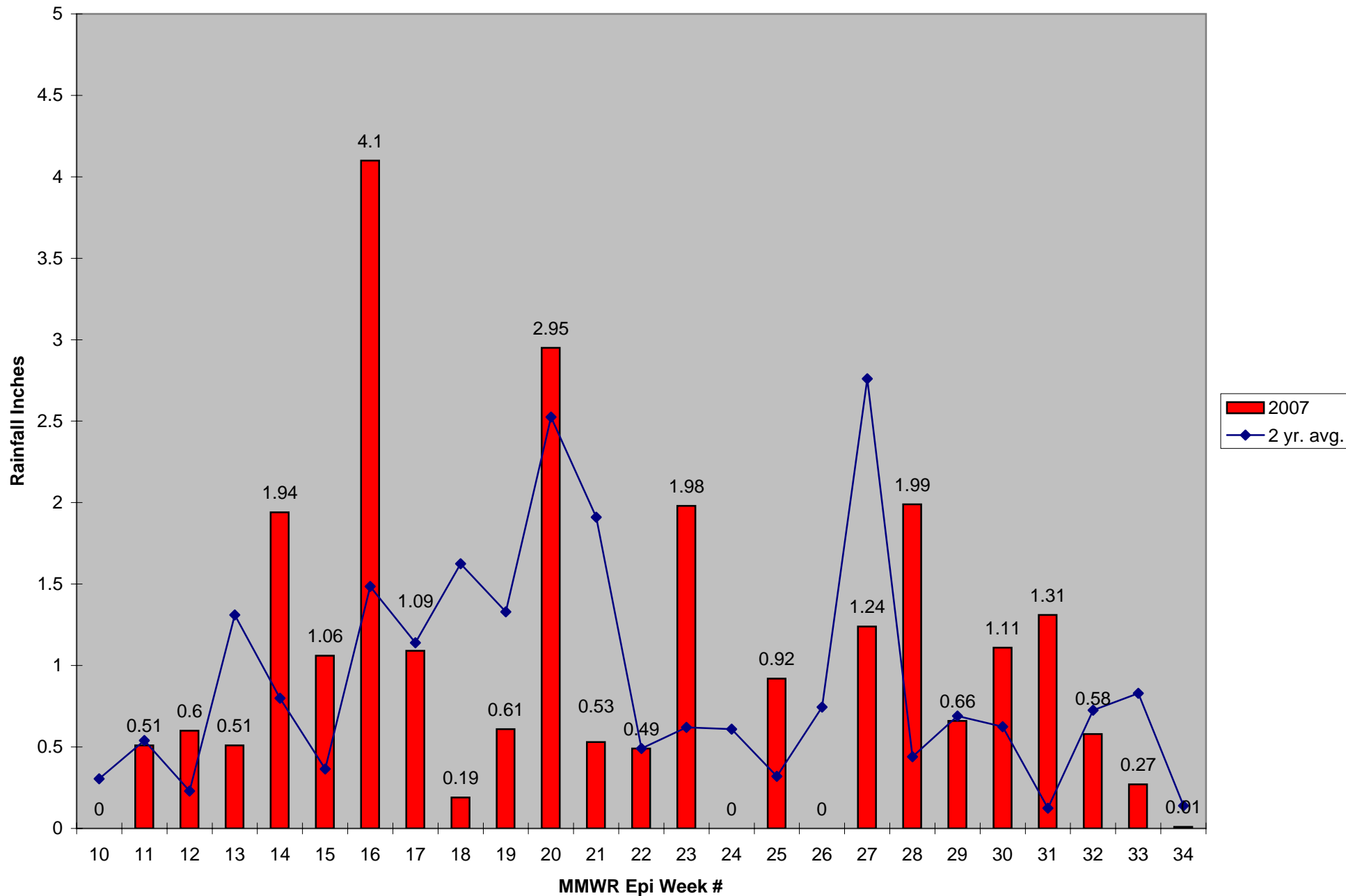
**Target Species                      Δ From        Δ From        Predominant Trap Site(s)**  
**Last Week    Last Year**

<i>Aedes vexans</i>	-75.00%	-95.65%	Millbury
<i>Coquillettidia perturbans</i>	-10.84%	-51.16%	Leominster, Westborough
<i>Culiseta melanura</i>	+78.57%	-71.26%	Tewksbury, Westborough
<i>Ochlerotatus canadensis</i>	0.00%	-100.00%	N/A
<i>Culex</i> Species	+88.64%	+94.34%	Hopedale
All Species	+20.89%	-0.34%	Hopedale, Leominster

The predominant mosquito species for the week was *Culex pipiens/restuans*.

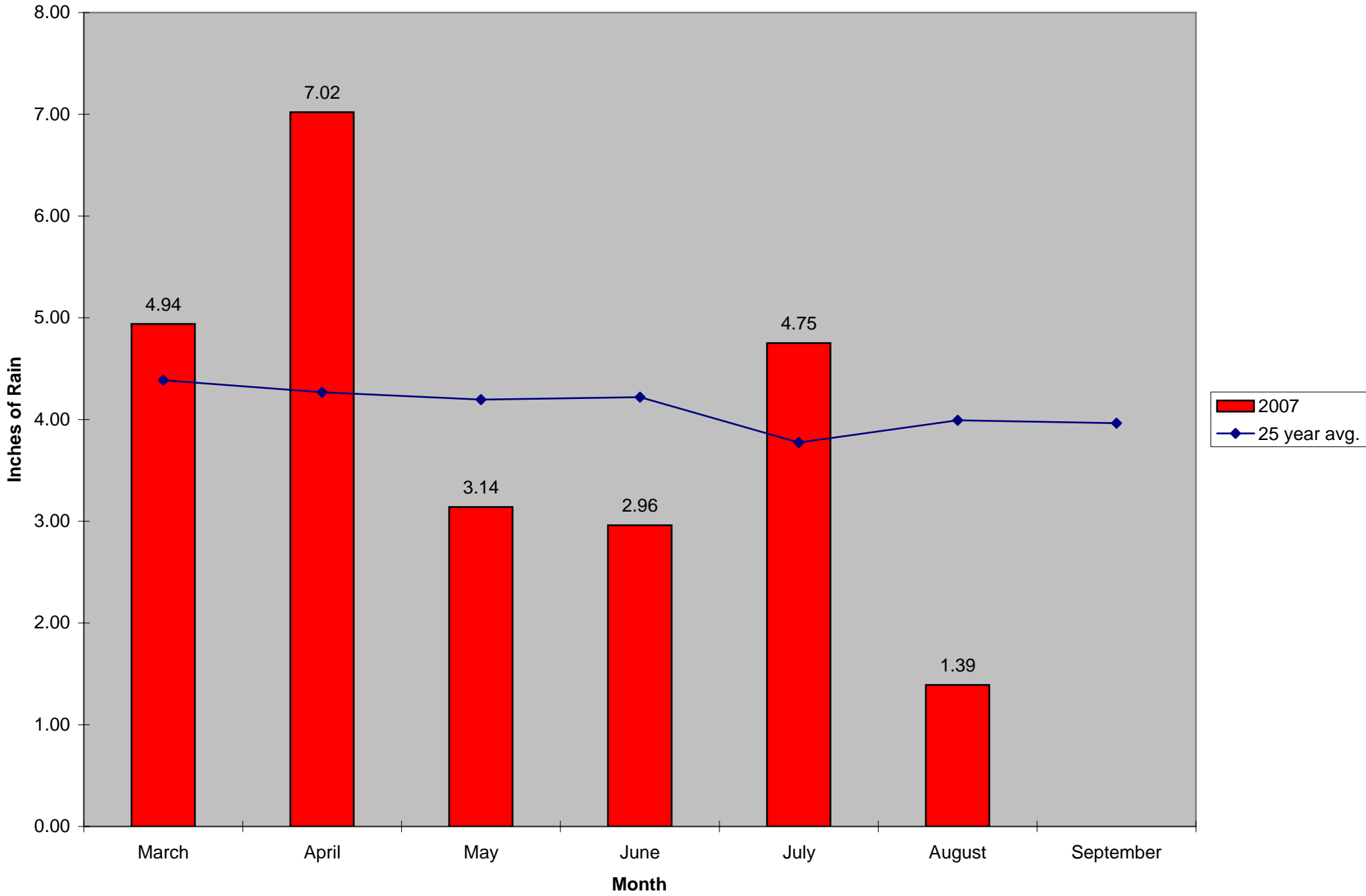
Service requests were up approximately 4% from the previous week according to the CMMCP Request Database.

### 2007 CMMCP Weekly Rainfall vs. 2 Year Average\*



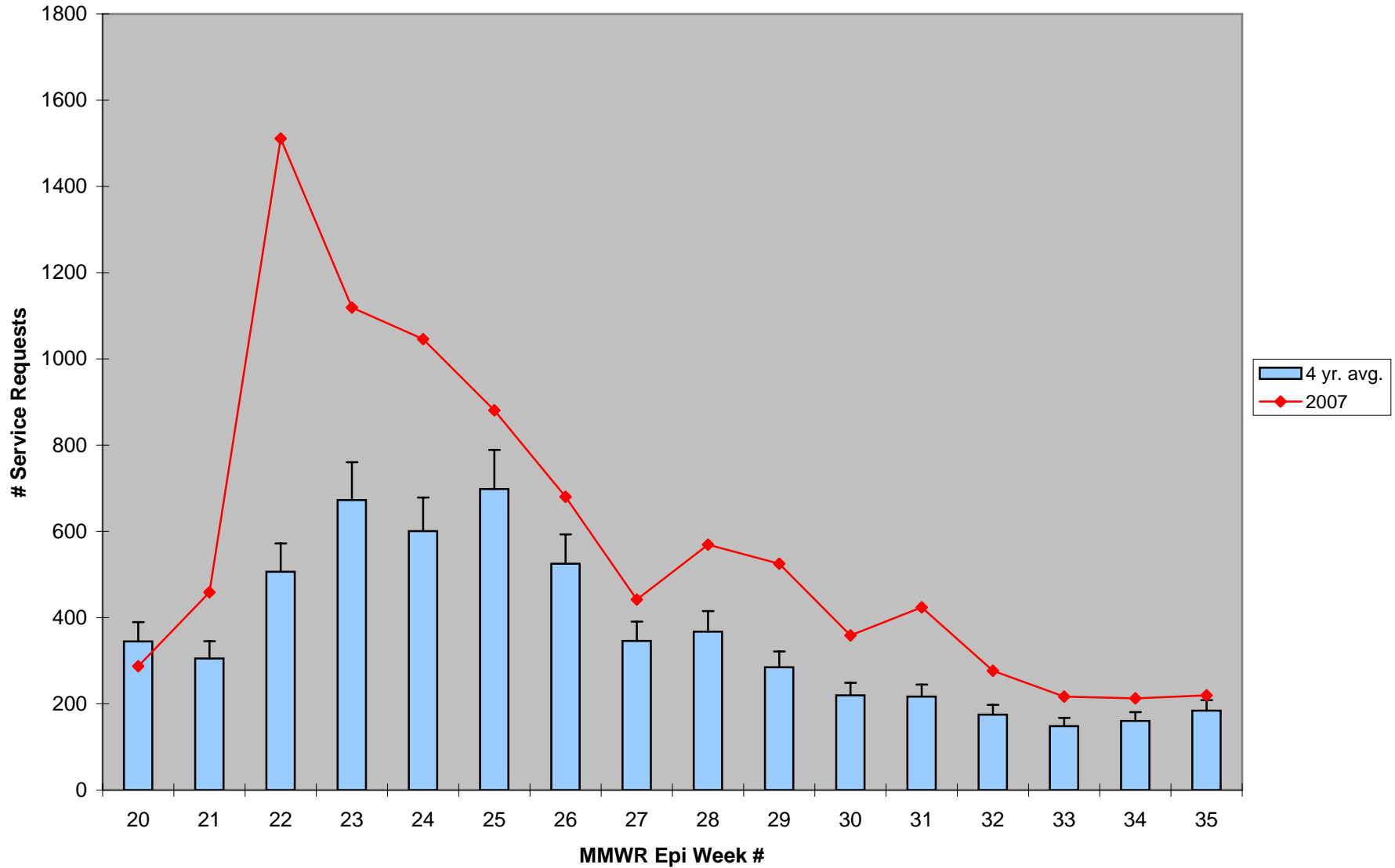
\*Source: CMMCP Weather Station - Northborough, MA

2007 Mass. Rainfall Data vs. 25 Year Average\*



\*Source: [http://www.nrcc.cornell.edu/climate/Climate\\_summary.html](http://www.nrcc.cornell.edu/climate/Climate_summary.html)

### ULV Service Request History Comparison 2003-2007



Standard deviation +13%

Source: CMMCP Requests Databases

39 towns 2007: 36 towns 2003-2006